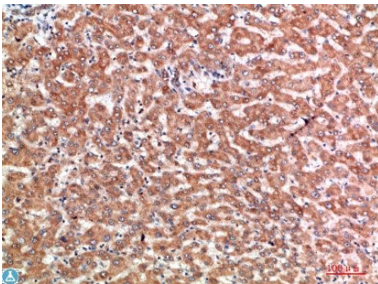
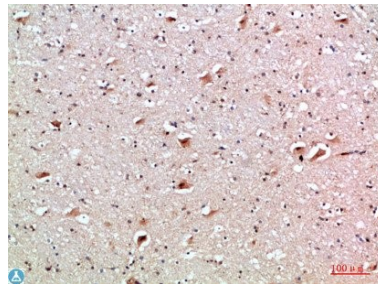


Cat. No:	AB-84285
Size:	100 ug
Clone:	POLY
Concentration:	1mg/ml
Host:	Rb
Isotype:	IgG
Immunogen:	Synthetic peptide from human CD137 protein.
Reactivity:	Hu
Applications:	Immunohistochemistry (paraffin-embedded tissues):1:50-300 ELISA 1:5000-20000
Purification:	The antibody was affinity-purified from rabbit serum by affinitychromatography using specific immunogen.
Synonyms:	Tumor necrosis factor receptor superfamily member 9 4-1BB ligand receptor CDw137 T-cell antigen 4-1BB homolog T-cell antigen ILA CD antigen CD137.
Background:	Specificity: The antibody detects endogenous CD137. Tissue Specificity: Expressed on the surface of activated T-cells.
Form:	Liquid
Buffer:	PBS, pH 7.4, containing 0.02% sodium azide as Preservative and 50% Glycerol.
Storage:	Store at -20°C, and avoid repeat freeze-thaw cycles.



Immunohistochemical analysis of paraffin-embedded human-liver-cancer, antibody was diluted at 1:200.



Immunohistochemical analysis of paraffin-embedded human-brain, antibody was diluted at 1:200.

**For Research use only
IMMUNOLOGICAL SCIENCES**