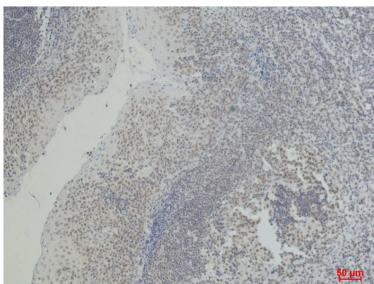


| | |
|-----------------------|--|
| Cat. No: | MAB-94777 |
| Conjugate: | Unconjugated |
| Size: | 100 ug |
| Clone: | G23 |
| Concentration: | 1mg/ml |
| Host: | Mouse |
| Isotype: | IgG |
| Immunogen: | Synthetic Peptide |
| Reactivity: | Human |
| Applications: | Immunohistochemistry: 1/200-500 |
| Purification: | Affinity purification |
| Synonyms: | CD2 molecule Erythrocyte receptor LFA 2 LFA 3 receptor Rosette receptor SRBC T cell surface antigen CD2 T11 |
| Background: | CD2 (cluster of differentiation 2) is a cell adhesion molecule found on the surface of T cells and natural killer (NK) cells. It has also been called T-cell surface antigen T11/Leu-5 LFA-2 LFA-3 receptor erythrocyte receptor and rosette receptor. It interacts with other adhesion molecules such as lymphocyte function-associated antigen-3 (LFA-3/CD58) in humans or CD48 in rodents which are expressed on the surfaces of other cells. |
| Form: | Liquid |
| Buffer: | PBS with 0.02% sodium azide and 50% glycerol pH 7.4. |
| Storage: | Store at -20°C. Avoid repeated freeze-thaw cycles. |



Immunohistochemical analysis of paraffin-embedded Human Tonsil Carcinoma using CD2 Mouse mAb diluted at:500.

**For Research use only
IMMUNOLOGICAL SCIENCES**