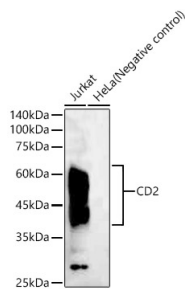


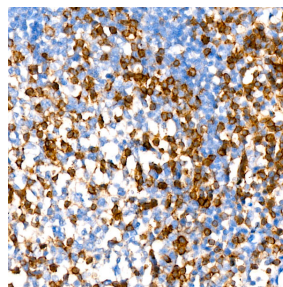
Cat. No:	MAB-94776
Conjugate:	Unconjugated
Size:	100 ug
Clone:	ARC59359
Concentration:	1mg/ml
Host:	Rabbit
Isotype:	IgG
Immunogen:	Recombinant protein of human CD2.
Reactivity:	Human
Applications:	Western Blot: 1:500 - 1:1000 Immunohistochemistry (paraffin-embedded tissues) 1:50 - 1:200
Molecular Weight:	40-65 kDa
Purification:	Affinity purification
Synonyms:	T11; SRBC; LFA-2
Background:	The protein encoded by this gene is a surface antigen found on all peripheral blood Tcells. The encoded protein interacts with LFA3 (CD58) on antigen presenting cells to optimize immune recognition. A locus control region (LCR) has been found in the 3' flanking sequence of this gene.
Form:	Liquid
Buffer:	PBS with 0.05% proclin300,0.05% BSA,50% glycerol,pH7.3.
Storage:	Store at -20°C. Avoid freeze / thaw cycles.



Western blot analysis of various lysates,
using CD2 Rabbit mAb at 1:1000
dilution.

Secondary antibody: HRP Goat Anti-
Rabbit IgG (H+L) at 1:10000 dilution.
Lysates/proteins: 25µg per lane.
Blocking buffer: 3% nonfat dry milk in
TBST.

Detection: ECL West Pico Plus.
Exposure time: 180s.



Immunohistochemistry of
paraffinembedded human tonsil using
CD2 Rabbit mAb at dilution of 1:200 (40x
lens).Perform high pressure antigen
retrieval with 10 mM citrate buffer pH
6.0 before commencing with IHC staining
protocol.

**For Research use only
IMMUNOLOGICAL SCIENCES**