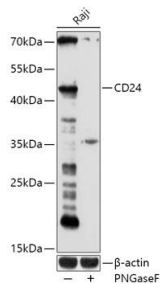
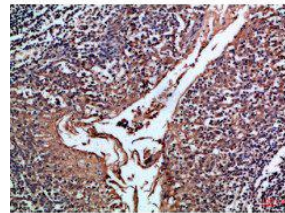


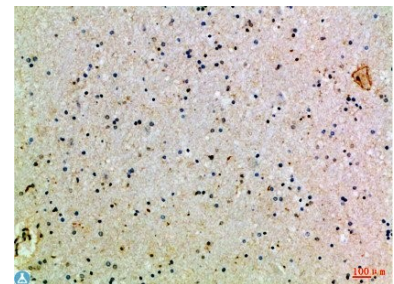
<b>Cat. No:</b>	AB-84212
<b>Size:</b>	100ug
<b>Clone:</b>	POLY
<b>Concentration:</b>	1mg/ml
<b>Host:</b>	Rb
<b>Isotype:</b>	IgG
<b>Immunogen:</b>	Synthetic peptide from human CD24 protein.
<b>Reactivity:</b>	Hu
<b>Applications:</b>	Western Blot: 1:500-2000 Immunohistochemistry: 1:100 ELISA: 1:10000-20000
<b>Molecular Weight:</b>	45kDa
<b>Purification:</b>	The antibody was affinity-purified from rabbit antiserum by affinity chromatography using epitope-specific immunogen.
<b>Synonyms:</b>	Signal transducer CD24 Small cell lung carcinoma cluster 4 antigen CD antigen CD24.
<b>Form:</b>	Liquid
<b>Buffer:</b>	PBS with 0.02% sodium azide, 50% glycerol, pH7.3.
<b>Storage:</b>	Store at -20°C. Avoid freeze / thaw cycles.



Western blot analysis of extracts of Raji cells, using CD24 antibody at 1:1000 dilution.  
Secondary antibody:  
HRP Goat Anti-Rabbit IgG (H+L) at 1:10000 dilution.  
Lysates/proteins: 25ug per lane.  
Blocking buffer: 3% nonfat dry milk in TBST.  
Detection: ECL West Pico Plus.  
Exposure time: 180s.



Immunohistochemical analysis of paraffin-embedded Human-tonsil, antibody was diluted at 1:100



Immunohistochemical analysis of paraffin-embedded Human-brain, antibody was diluted at 1:100.

**For Research use only  
IMMUNOLOGICAL SCIENCES**