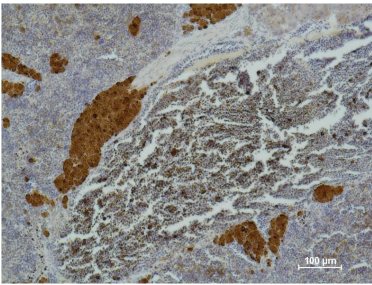


Cat. No:	MAB-94778
Conjugate:	Unconjugated
Size:	100 ug
Clone:	C06
Concentration:	1mg/ml
Host:	Mouse
Isotype:	IgG1
Immunogen:	Synthetic Peptide
Reactivity:	Human
Applications:	Immunohistochemistry:1/200-500
Purification:	Affinity purification
Synonyms:	IL2 receptor alpha Interleukin 2 receptor alpha chain IL 2RA Ly43 p55 TCGFR
Background:	CD25 is the alpha chain of the IL-2 receptor. It is a type I transmembrane protein present on activated T cells activated B cells.
Form:	Liquid
Buffer:	PBS with 0.02% sodium azide and 50% glycerol pH 7.4.
Storage:	Store at -20°C. Avoid repeated freeze-thaw cycles.



Immunohistochemical analysis of paraffin-embedded Mouse Spleen Tissue using CD 25 Mouse mAb diluted at:500.

**For Research use only
IMMUNOLOGICAL SCIENCES**