

Cat. No: AB-81831

Size: 100 ug

Clone: POLY

Concentration: 1mg/ml

Host: Rabbit

Isotype: IgG

Immunogen: RThe antibody was affinity-purified from rabbit antiserum by affinity-chromatography using epitope-specific immunogen.

Reactivity: Hu,Ms,Rt

Applications: Western Blot: 1:500 - 1:2000
Immunohistochemistry: 1:50 - 1:300
Immunoprecipitation: 1:50 - 1:100

Molecular Weight: 21kDa

Purification: Aff. Pur.

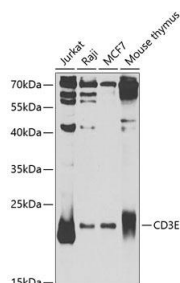
Synonyms: CD3E;IMD18;T3E;TCRE;CD3e molecule

Background: The protein encoded by this gene is the CD3-epsilon polypeptide, which together with CD3-gamma, -delta and -zeta, and the T-cell receptor alpha/beta and gamma/delta heterodimers, forms the T-cell receptor-CD3 complex. This complex plays an important role in coupling antigen recognition to several intracellular signal-transduction pathways. The genes encoding the epsilon, gamma and delta polypeptides are located in the same cluster on chromosome 11. The epsilon polypeptide plays an essential role in T-cell development. Defects in this gene cause immunodeficiency. This gene has also been linked to a susceptibility to type I diabetes in women.

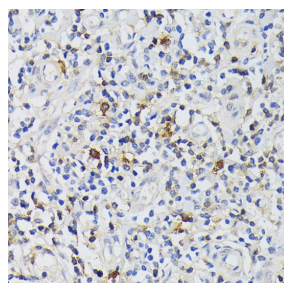
Form: Liquid

Buffer: Liquid in PBS containing 50% glycerol, 0.5% BSA and 0.02% sodium azide.

Storage: Store at -20°C. Avoid freeze / thaw cycles.



Western blot analysis of extracts of various cell lines, using CD3E Antibody at 1:1000 dilution. Secondary antibody: HRP Goat Anti-Rabbit IgG (H+L) at 1:10000 dilution. Lysates/proteins: 25ug per lane. Blocking buffer: 3% nonfat dry milk in TBST.



Immunohistochemistry of paraffin embedded human tonsil using CD3E Antigen antibody at dilution of 1:200 (40x lens).

Detection: ECL West Pico Plus
Exposure time: 5s

**For Research use only
IMMUNOLOGICAL SCIENCES**