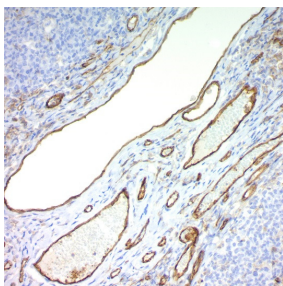


<b>Cat. No:</b>	MAB-94774
<b>Conjugate:</b>	Unconjugated
<b>Size:</b>	250 ul
<b>Clone:</b>	JC/70A
<b>Concentration:</b>	250ug/ml
<b>Host:</b>	Mouse
<b>Isotype:</b>	IgG1, Kappa
<b>Immunogen:</b>	Membrane preparation of a spleen from a patient with hairy cell leukemia.
<b>Reactivity:</b>	Human
<b>Applications:</b>	Immunohistochemistry (Frozen and Formalin-fixed): 1:500-1:1000 Flow Cytometry: 1-2µg/million cells Immunofluorescence: 1:500-1:1000 Western Blotting: 1:500-1:1000 Immunoprecipitation: 1:500-1:1000 protein lysate
<b>Molecular Weight:</b>	~100kDa (endothelium) and ~130kDa (platelets)
<b>Synonyms:</b>	EndoCAM; PECA1; Platelet Endothelial Cell Adhesion Molecule 1; GPIIA'
<b>Background:</b>	CD31 (PECAM-1) is a transmembrane glycoprotein member of the immunoglobulin supergene family of adhesion molecules. CD31 is expressed by stem cells of the hematopoietic system and is primarily used to identify and concentrate these cells for experimental studies as well as for bone marrow transplantation. The level of CD31 expression can help to determine the degree of tumor angiogenesis, and a high level of CD31 expression may imply a rapidly growing tumor and potentially be a predictor of tumor recurrence.
<b>Form:</b>	Liquid
<b>Buffer:</b>	250µg/ml of Ab purified from Bioreactor Concentrate by Protein A/G. Prepared in 10mM PBS with 0.05% BSA & 0.05% azide.
<b>Storage:</b>	Store at 2~8°C, Avoid freeze / thaw cycles



Formalin-fixed, paraffin-embedded tonsil  
stained with CD31; Clone JC/70A.

**For Research use only  
IMMUNOLOGICAL SCIENCES**