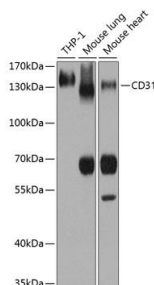
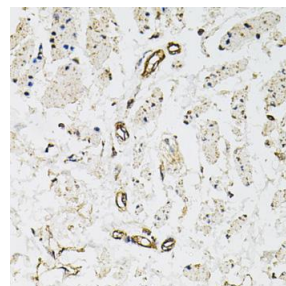


Cat. No:	AB-83615
Conjugate:	Unconjugated
Size:	100 ug
Clone:	POLY
Concentration:	1mg/ml
Host:	Rabbit
Isotype:	IgG
Immunogen:	A synthetic peptide corresponding to a sequence within amino acids 600 to the C-terminus of mouse CD31
Reactivity:	Hu,Ms,Rt
Applications:	Western Blot: 1:500 - 1:2000 Immunohistochemistry: 1:50 - 1:200 Immunoprecipitation: 1:50 - 1:200 Immunofluorescence: 1:50-1:200
Molecular Weight:	130kDa
Purification:	Aff. Pur.
Synonyms:	PECAM1;CD31;CD31/EndoCAM;GPIIA;PECA1;PECAM-1;endoCAM
Background:	The protein encoded by this gene is found on the surface of platelets, monocytes, neutrophils, and some types of T-cells, and makes up a large portion of endothelial cell intercellular junctions. The encoded protein is a member of the immunoglobulin superfamily and is likely involved in leukocyte migration, angiogenesis, and integrin activation.
Form:	Liquid
Buffer:	PBS with 0.02% sodium azide,50% glycerol,pH7.3.
Storage:	Store at -20°C. Avoid freeze / thaw cycles.

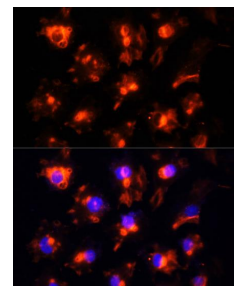


Western blot analysis of extracts of various cell lines, using CD31 antibody at 1:1000 dilution. Secondary antibody: HRP Goat Anti- Rabbit IgG (H+L) at 1:10000 dilution.

Lysates/proteins: 25ug per lane.
Blocking buffer: 3% nonfat dry milk in TBST.
Detection: ECL West Pico Plus.

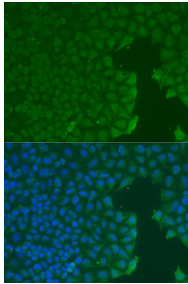


Immunohistochemistry of paraffin embedded human esophagus using CD31 antibody at dilution of 1:100 (40x lens).

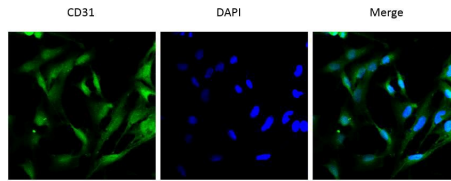


Immunofluorescence analysis of HUVEC cells using CD31 antibody at dilution of 1:100. Blue: DAPI for nuclear staining.

Exposure time: 3s.

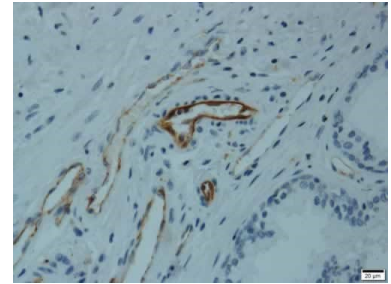


Immunofluorescence analysis of U2OS cells using CD31 antibody at dilution of 1:100.
Blue: DAPI for nuclear staining.



Review for CD31 Rabbit Polyclonal Antibody

Experiment Type: Immunofluorescence (IF)
Sample: Rat lung



Review for CD31 Rabbit Polyclonal Antibody

Experiment Type:
Immunohistochemistry(IHC)

Sample: Human prostate
Description: Immunohistochemistry analysis of Human prostate, using PECAM1 Polyclonal Antibody.

**For Research use only
IMMUNOLOGICAL SCIENCES**