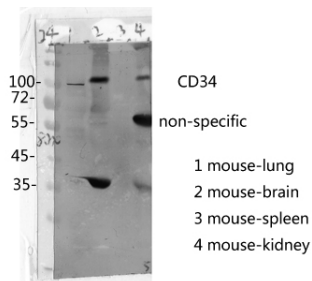
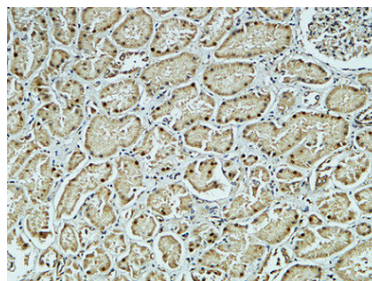


Cat. No:	AB-E5174
Conjugate:	Unconjugated
Size:	100 ug
Clone:	POLY
Concentration:	1mg/ml
Host:	Rabbit
Isotype:	IgG
Immunogen:	The antiserum was produced against synthesized peptide derived from human CD34. AA
Reactivity:	Human, Mouse Western Blot 1:500-2000
Applications:	Immunohistochemistry (paraffin-embedded tissues): 1:100-500 Immunofluorescence: 1:100-500 Immunocytochemistry: 1:100-500
Molecular Weight:	110kD
Purification:	The antibody was affinity-purified from rabbit antiserum by affinity-chromatography using epitope-specific immunogen.
Synonyms:	CD34; Hematopoietic progenitor cell antigen CD34; CD antigen CD34
Background:	The protein encoded by this gene may play a role in the attachment of stem cells to the bone marrow extracellular matrix or to stromal cells. This single-pass membrane protein is highly glycosylated and phosphorylated by protein kinase C. Two transcript variants encoding different isoforms have been found for this gene.
Form:	Liquid
Buffer:	Liquid in PBS containing 50% glycerol, 0.5% BSA and 0.02% sodium azide.
Storage:	Store at -20°C. Avoid repeated freeze-thaw cycles.



Western Blot analysis of mouse cells using
CD34 Rabbit Polyclonal Antibody



Immunohistochemical analysis of
paraffin-embedded Human kidney. 1,
Antibody was diluted at 1:200(4°
overnight). 2, High-pressure and
temperature EDTA, pH8.0 was used for
antigen retrieval. 3,Secondary antibody
was diluted at 1:200(room temperature,
30min).

**For Research use only
IMMUNOLOGICAL SCIENCES**