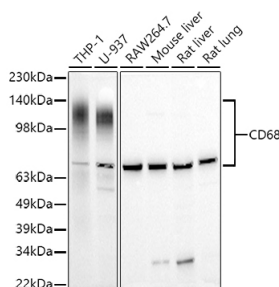


Cat. No:	AB-81775
Conjugate:	Unconjugated
Size:	100 ug
Clone:	POLY
Concentration:	1mg/ml
Host:	Rb
Isotype:	IgG
Immunogen:	A synthetic peptide corresponding to a sequence within amino acids 100-200 of human CD68.
Reactivity:	Human, Mouse, Rat
Applications:	Western Blot: 1:500 - 1:1000 Immunofluorescence: 1:50 - 1:200 Immunocytochemistry: 1:50 - 1:200
Molecular Weight:	80-130kDa
Purification:	Affinity purification
Synonyms:	GP110; LAMP4; SCARD1; CD68

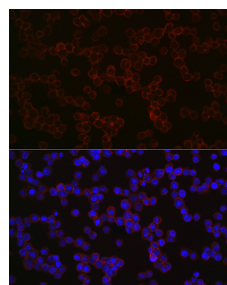
Background:

This gene encodes a 110-kD transmembrane glycoprotein that is highly expressed by human monocytes and tissue macrophages. It is a member of the lysosomal/endosomal-associated membrane glycoprotein (LAMP) family. The protein primarily localizes to lysosomes and endosomes with a smaller fraction circulating to the cell surface. It is a type I integral membrane protein with a heavily glycosylated extracellular domain and binds to tissue- and organ-specific lectins or selectins. The protein is also a member of the scavenger receptor family. Scavenger receptors typically function to clear cellular debris, promote phagocytosis, and mediate the recruitment and activation of macrophages. Alternative splicing results in multiple transcripts encoding different isoforms.

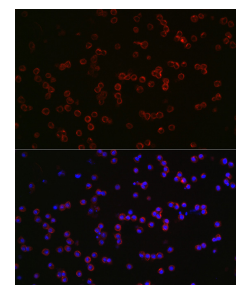
Form:	Liquid
Buffer:	PBS with 0.05% proclin300, 50% glycerol, pH7.3.
Storage:	Store at -20°C. Avoid freeze / thaw cycles.



Western blot analysis of various lysates using CD68 Rabbit pAb at 1:1000 dilution.
Secondary antibody: HRP Goat Anti-Rabbit IgG (H+L) at 1:10000 dilution.
Lysates/proteins: 25µg per lane.



Immunofluorescence analysis of THP-1 cells using CD68 Rabbit pAb at dilution of 1:250. Secondary antibody: Cy3 Goat Anti-Rabbit IgG (H+L) at 1:500 dilution.
Blue: DAPI for nuclear staining.



Immunofluorescence analysis of RAW264.7 cells using CD68 Rabbit pAb at dilution of 1:250. Secondary antibody: Cy3
Goat Anti-Rabbit IgG (H+L) at 1:500 dilution. Blue: DAPI for nuclear staining.

Blocking buffer: 3% nonfat dry milk in
TBST.

Detection: ECL West Pico Plus.
Exposure time: 10s.

**For Research use only
IMMUNOLOGICAL SCIENCES**