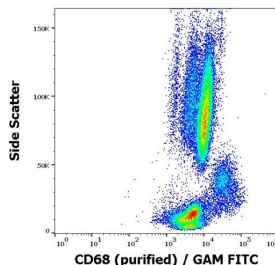
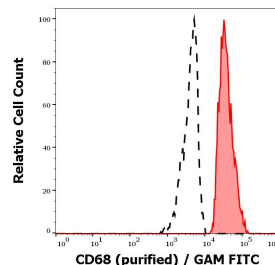


| | |
|--------------------------|---|
| Cat. No: | MAB-94308 |
| Conjugate: | Unconjugated |
| Size: | 100 ug |
| Clone: | Y1/82A |
| Concentration: | 1mg/ml |
| Host: | Mouse |
| Isotype: | Mouse IgG2b |
| Immunogen: | Lysosomal contents of lung macrophages |
| Reactivity: | Human |
| Applications: | Flow cytometry: Recommended dilution: 2-6 µg/ml. Extracellular and intracellular staining |
| Molecular Weight: | 110 kDa |
| Purification: | Purified by protein-A affinity chromatography |
| Synonyms: | GP110, LAMP4, SCARD1 |
| Background: | CD68 (also known as LAMP4 or SCARD1) is a 110 kDa type I transmembrane glycoprotein of the lysosomal/endosomal-associated membrane glycoprotein (LAMP) family and the scavenger receptor family. Although CD68 primarily localizes to lysosomes and endosomes, its fraction circulates to the cell surface. By the heavily glycosylated extracellular domain CD68 binds to tissue- and organ-specific lectins or selectins. It is expressed mainly in cytoplasmic granules of monocytes/macrophages, granulocytes, and dendritic cells, but also e.g. in a proportion of epithelial tumours (diagnosis of poorly differentiated neoplasms). |
| Form: | Liquid |
| Buffer: | Phosphate buffered saline (PBS), pH 7.4, 15 mM sodium azide |
| Storage: | Store at 2-8°C. Do not freeze. |



Flow cytometry intracellular staining pattern of human peripheral blood stained using anti-human CD68 (Y1/82A) purified antibody (concentration in sample 2 µg/ml) GAM FITC.



Separation of human monocytes (red-filled) from CD68 negative lymphocytes (black-dashed) in flow cytometry analysis (intracellular staining) of human peripheral whole blood stained using anti-human CD68 (Y1/82A) purified antibody (concentration in sample 2 µg/ml) GAM FITC.

**For Research use only
IMMUNOLOGICAL SCIENCES**