

Cat. No: AB-83878
Size: 100µg
Clone: POLY
Concentration: 1mg/ml
Host: Rb
Isotype: IgG
Immunogen: Synthesized peptide derived from human CD81
Reactivity: Ms
Applications: Western Blot : 1:500-1:2000
 Immunofluorescence: 1:50-200

Molecular Weight: 23kDa

Purification: The antibody was affinity-purified from rabbit antiserum by affinity-chromatography using a epitope-specific immunogen.

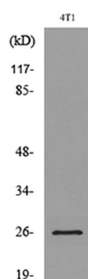
Synonyms: Anti-Cd81 Antigen antibody annti-26 Kda Cell Surface Protein Tapa-1 antibody, Anti-Target Of The Antiproliferative Antibody 1 antibody, Anti-Tetraspanin-28 antibody, Anti-Tspan-28 antibody, Anti-Cd Antigen Cd81 antibody, Anti-CD81 antibody, Anti-TAPA1 antibody Anti-TSPAN28 antibody.

Background: The protein encoded by this gene is a member of the transmembrane 4 superfamily, also known as the tetraspanin family. Most of these members are cell-surface proteins that are characterized by the presence of four hydrophobic domains. The proteins mediate signal transduction events that play a role in the regulation of cell development, activation, growth and motility. This encoded protein is a cell surface glycoprotein that is known to complex with integrins. This protein appears to promote muscle cell fusion and support myotube maintenance. Also it may be involved in signal transduction. This gene is localized in the tumor-suppressor gene region and thus it is a candidate gene for malignancies. Two transcript variants encoding different isoforms have been found for this gene. Specificity: CD81 polyclonal antibody detects endogenous levels of CD81 protein.

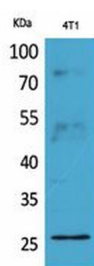
Form: Liquid

Buffer: Liquid in PBS containing 50% glycerol, 0.5% BSA and 0.02% sodium azide.

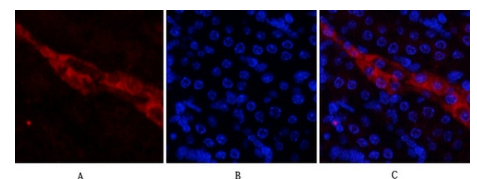
Storage: At +4°C for short term. At -20°C for longer term. Avoid freeze / thaw cycles.



Western blot analysis of lysate from 4T1 cells, using CD81 Antibody.



Western blot analysis of 4T1 cells using CD81 Polyclonal Antibody. Antibody was diluted at

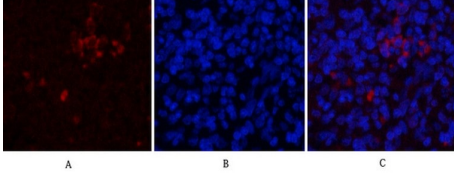


Immunofluorescence analysis of mouse kidney tissue. 1, CD81 Polyclonal Antibody (red) was diluted at 1:200 (4°C, overnight).

2, Cy3 labeled Secondary antibody was diluted at 1:300 (roomtemperature, 50min). 3, Picture B: DAPI (blue) 10min.

1:2000. Secondary antibody was diluted
at 1:20000

Picture A:Target.
Picture B: DAPI.
Picture C: merge of A+B



Immunofluorescence analysis of rat-spleen tissue. 1, CD81 Polyclonal Antibody (red) was diluted at 1:200 (4°C, overnight). 2, Cy3 labeled Secondary antibody was diluted at 1:300 (room temperature, 50min).3, Picture B: DAPI (blue) 10min.

Picture A:Target.

Picture B: DAPI.

Picture C: merge of A+B

**For Research use only
IMMUNOLOGICAL SCIENCES**