

Cat. No: AB-84415
Conjugate: Unconjugated
Size: 100 ug
Clone: POLY
Concentration: 1mg/ml
Host: Rabbit
Isotype: IgG
Immunogen: Synthesized peptide derived from human CD86
Reactivity: Human, Mouse, Rat

Applications: Western Blot: 1:500-2000
Immunofluorescence: 1:100-500
Immunocytochemistry: 1:100-500
ELISA: 1:5000-20000

Molecular Weight: 60-80kD

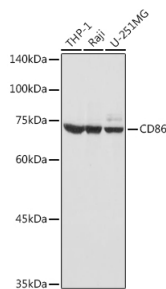
Purification: The antibody was affinity-purified from rabbit antiserum by affinity-chromatography using epitope-specific immunogen.

Background: This gene encodes a type I membrane protein that is a member of the immunoglobulin superfamily. This protein is expressed by antigen-presenting cells, and it is the ligand for two proteins at the cell surface of T cells, CD28 antigen and cytotoxic T-lymphocyte-associated protein 4. Binding of this protein with CD28 antigen is a costimulatory signal for activation of the T-cell. Binding of this protein with cytotoxic T-lymphocyte-associated protein 4 negatively regulates T-cell activation and diminishes the immune response. Alternative splicing results in several transcript variants encoding different isoforms.

Form: Liquid

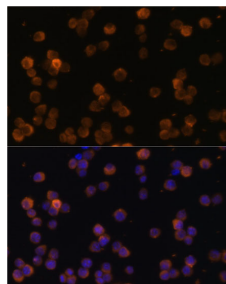
Buffer: Liquid in PBS containing 50% glycerol, 0.5% BSA and 0.02% sodium azide.

Storage: Store at -20°C. Avoid repeated freeze-thaw cycles.



Western blot analysis of extracts of various cell lines, using CD86 antibody at 1:1000 dilution. Secondary antibody: HRP Goat Anti-Rabbit IgG (H+L) at 1:10000 dilution.

Lysates/proteins: 25ug per lane.
Blocking buffer: 3% nonfat dry milk in TBST.



Immunofluorescence analysis of Raw264.7 cells using CD86 antibody at dilution of 1:100.
Blue: DAPI for nuclear staining.

Detection: ECL West Pico Plus.
Exposure time: 1s

**For Research use only
IMMUNOLOGICAL SCIENCES**