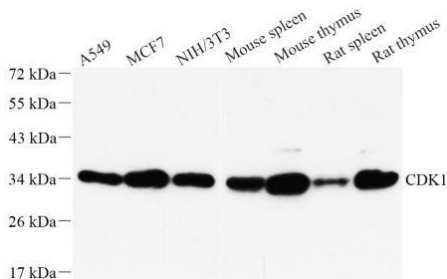
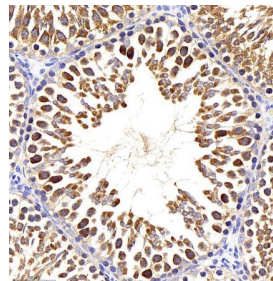


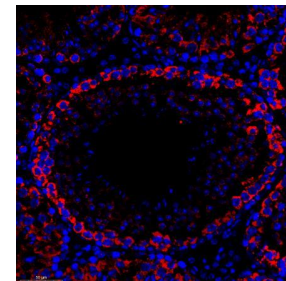
| | |
|--------------------------|--|
| Cat. No: | AB-81837 |
| Size: | 100µg |
| Clone: | POLY |
| Concentration: | 1mg/ml |
| Host: | Rabbit |
| Isotype: | IgG |
| Immunogen: | Recombinant protein corresponding to Mouse CDK1 |
| Reactivity: | Human, Mouse, Rat |
| Applications: | Western Blot: 1: 500-1: 2000 Immunohistochemistry: 1: 200-1: 800 Immunofluorescence: 1: 200-1: 800 |
| Molecular Weight: | 34 kDa |
| Purification: | Affinity purification |
| Synonyms: | CDK1, CDC2, CDC28A, P34CDC2, cyclin-dependent kinase 1, cyclin dependent kinase 1 |
| Background: | Cyclin-dependent kinase 1 also known as CDK1 or cell division cycle protein 2 homolog is a highly conserved protein that functions as a serine/threonine kinase, and is a key player in cell cycle regulation. This protein is a catalytic subunit of the highly conserved protein kinase complex known as M-phase promoting factor (MPF), which is essential for G1/S and G2/M phase transitions of eukaryotic cell cycle. Mitotic cyclins stably associate with this protein and function as regulatory subunits. The kinase activity of this protein is controlled by cyclin accumulation and destruction through the cell cycle. |
| Form: | Liquid |
| Buffer: | PBS with 0.02% sodium azide, 100 µg/mL BSA and 50% glycerol. |
| Storage: | Store at -20°C for one year. Avoid repeated freeze/thaw cycles. |



Western blot analysis of CDK1 at dilution of 1:1000



Immunohistochemistry analysis of paraffin embedded rat testis using CDK1 at dilution of 1: 400



Immunofluorescence analysis of paraffin embedded mouse testis using CDK1 at dilution of 1: 400

**For Research use only
IMMUNOLOGICAL SCIENCES**