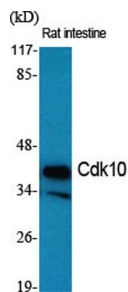
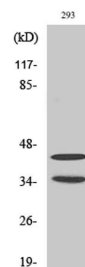


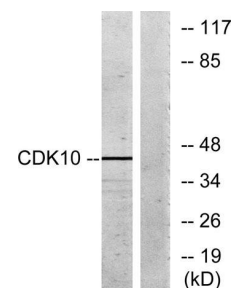
Cat. No:	AB-84766
Conjugate:	Unconjugated
Size:	100 ug
Clone:	POLY
Concentration:	1mg/ml
Host:	Rabbit
Isotype:	IgG
Immunogen:	The antiserum was produced against synthesized peptide derived from human CDK10. AA range:51-100
Reactivity:	Human, Mouse, Rat
Molecular Weight:	43kDa
Purification:	The antibody was affinity-purified from rabbit antiserum by affinity-chromatography using epitope-specific immunogen.
Synonyms:	CDK10; Cyclin-dependent kinase 10; Cell division protein kinase 10; Serine/threonine-protein kinase PISSLRE
Background:	The protein encoded by this gene belongs to the CDK subfamily of the Ser/Thr protein kinase family. The CDK subfamily members are highly similar to the gene products of <i>S. cerevisiae</i> cdc28, and <i>S. pombe</i> cdc2, and are known to be essential for cell cycle progression. This kinase has been shown to play a role in cellular proliferation and its function is limited to cell cycle G2-M phase. Multiple transcript variants encoding different isoforms have been found for this gene.
Form:	Liquid
Buffer:	Liquid in PBS containing 50% glycerol, 0.5% BSA and 0.02% sodium azide.
Storage:	Store at -20°C. Avoid repeated freeze-thaw cycles.



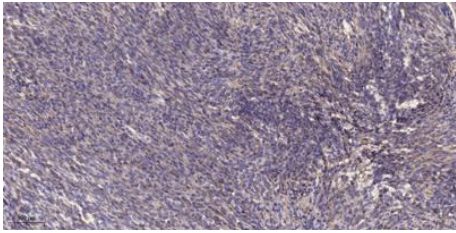
Western Blot analysis of various cells using Cdk10 Polyclonal Antibody diluted at 1:500



Western Blot analysis of 293 cells using Cdk10 Polyclonal Antibody diluted at 1:500



Western blot analysis of lysates from 293 cells, using CDK10 Antibody. The lane on the right is blocked with the synthesized peptide.



Immunohistochemical analysis of paraffin-embedded human Colon cancer.

- 1, Antibody was diluted at 1:200(4° overnight).
- 2, Tris-EDTA,pH9.0 was used for antigen retrieval.
- 3,Secondary antibody was diluted at 1:200(room temperature, 45min).

**For Research use only
IMMUNOLOGICAL SCIENCES**