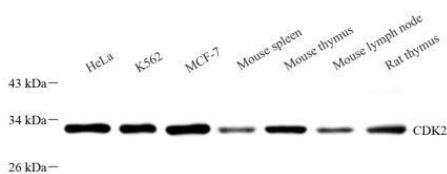
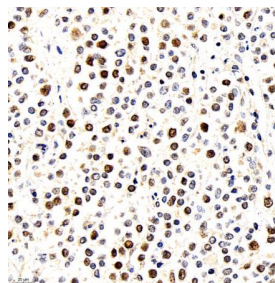


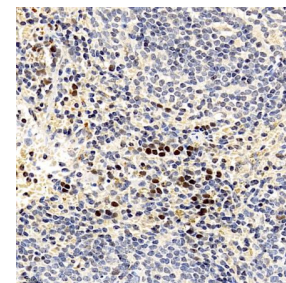
Cat. No:	AB-81213
Conjugate:	Unconjugated
Size:	100 ug
Clone:	POLY
Concentration:	1mg/ml
Host:	Rabbit
Isotype:	IgG
Immunogen:	KLH conjugated Synthetic peptide corresponding to Human Cdk2
Reactivity:	Human, Mouse, Rat
Applications:	Western Blot: 1:500 -1:1000 Immunohistochemistry: 1:50 Immunofluorescence: 1: 200-1: 800
Molecular Weight:	34 kDa
Purification:	Affinity purification
Synonyms:	Cell division protein kinase 2, p33 protein kinase, CDK2, CDKN2, CDC28, CDC2A, Cdc2 related protein kinase, p33(CDK2), MPF
Background:	The protein encoded by this gene is a member of the Ser/Thr protein kinase family. This protein kinase is highly similar to the gene products of <i>S. cerevisiae</i> cdc28, and <i>S.pombe</i> cdc2. It is a catalytic subunit of the cyclin-dependent protein kinase complex, whose activity is restricted to the G1-S phase, and essential for cell cycle G1/S phase transition. This protein associates with and regulated by the regulatory subunits of the complex including cyclin A or E, CDK inhibitor p21Cip1 (CDKN1A) and p27Kip1 (CDKN1B).
Form:	Liquid
Buffer:	PBS with 0.02% sodium azide, 100 µg/mL BSA and 50% glycerol.
Storage:	Store at -20°C for one year. Avoid repeated freeze/thaw cycles.



Western blot analysis of Cdk2 at dilution of 1: 800



Immunohistochemistry analysis of paraffin embedded human B lymphocytoma using CDK2) at dilution of 1: 350



Immunohistochemistry analysis of paraffin embedded mouse spleen using CDK2 at dilution of 1:350

**For Research use only
IMMUNOLOGICAL SCIENCES**