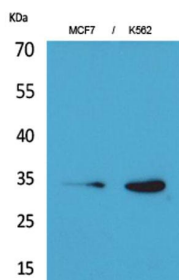
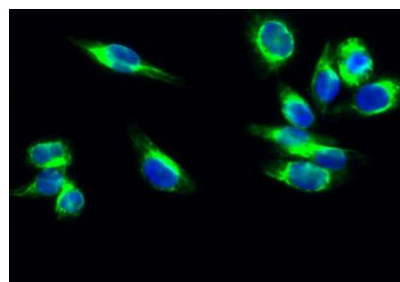


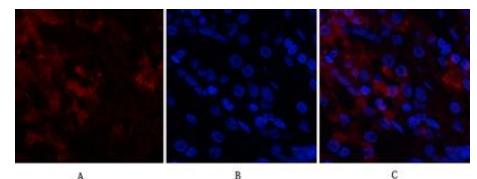
Cat. No:	AB-80582
Conjugate:	Unconjugated
Size:	100µg
Clone:	POLY
Concentration:	1mg/ml
Host:	Rabbit
Isotype:	IgG
Immunogen:	The antiserum was produced against synthesized peptide derived from the N-terminal region of human CDK4. AA range:1-50
Reactivity:	Human;Rat;Mouse
Applications:	Western Blot: 1/500 - 1/2000 Immunofluorescence: 1:50-200 Immunohistochemistry (paraffin embedded tissues): 1:100-300
Molecular Weight:	35kDa
Purification:	The antibody was affinity-purified from rabbit antiserum by affinity-chromatography using epitope-specific immunogen.
Synonyms:	CDK4; Cyclin-dependent kinase 4; Cell division protein kinase 4; PSK-J3
Background:	cyclin dependent kinase 4(CDK4) Homo sapiens The protein encoded by this gene is a member of the Ser/Thr protein kinase family. This protein is highly similar to the gene products of <i>S. cerevisiae</i> cdc28 and <i>S. pombe</i> cdc2. It is a catalytic subunit of the protein kinase complex that is important for cell cycle G1 phase progression. The activity of this kinase is restricted to the G1-S phase, which is controlled by the regulatory subunits D-type cyclins and CDK inhibitor p16(INK4a). This kinase was shown to be responsible for the phosphorylation of retinoblastoma gene product (Rb). Mutations in this gene as well as in its related proteins including D-type cyclins, p16(INK4a) and Rb were all found to be associated with tumorigenesis of a variety of cancers. Multiple polyadenylation sites of this gene have been reported.
Form:	Liquid
Buffer:	Liquid in PBS containing 50% glycerol, 0.5% BSA and 0.02% sodium azide.
Storage:	Store at -20°C. Avoid freeze / thaw cycles.



Western Blot analysis of MCF7, K562 cells using Cdk4 Polyclonal Antibody. Secondary antibody was diluted at



Immunofluorescence analysis of HeLa cell. 1,Cdk4 Polyclonal Antibody(green) was diluted at 1:200(4° overnight). 2,

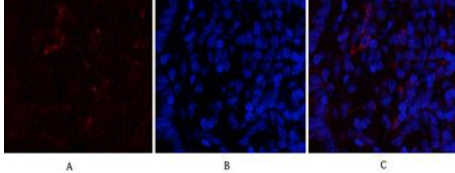


Immunofluorescence analysis of human-stomach tissue.1,Cdk4 Polyclonal Antibody(red) was diluted at 1:200(4°C,overnight). 2, Cy3 labeled Secondary antibody was diluted at 1:300(room temperature, 50min).3, Picture B: DAPI(blue) 10min.

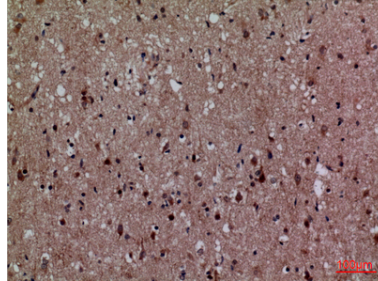
1:20000

Goat Anti Rabbit Alexa Fluor 488 was diluted at 1:1000(room temperature,50min). 3 DAPI(blue) 10min.

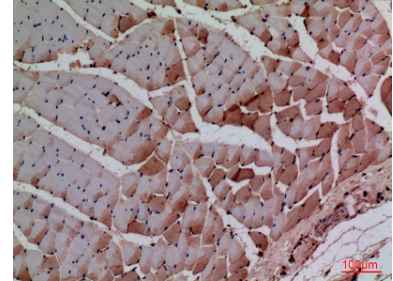
Picture A:Target. Picture B: DAPI. Picture C: merge of A+B



Immunofluorescence analysis of rat-lung tissue. 1,Cdk4 Polyclonal Antibody(red) was diluted at 1:200(4°C,overnight). 2, Cy3 labled Secondary antibody was diluted at 1:300(room temperature, 50min).3, Picture B: DAPI(blue) 10min. Picture A:Target. Picture B



Immunohistochemical analysis of paraffin-embedded human-brain, antibody was diluted at 1:100



Immunohistochemical analysis of paraffin-embedded rat-muscle, antibody was diluted at 1:100

**For Research use only
IMMUNOLOGICAL SCIENCES**