

Cat. No:	AB-82085
Conjugate:	Unconjugated
Size:	100 ug
Clone:	POLY
Concentration:	1mg/ml
Host:	Rabbit
Isotype:	IgG
Immunogen:	Recombinant fusion protein containing a sequence corresponding to amino acids 1-198 of human CDKN1B/p27KIP1 (NP_004055.1).
Reactivity:	Hu, Ms, Rt
Applications:	Western Blot: 1:500 - 1:2000 Immunohistochemistry: 1:50 - 1:200 Immunofluorescence: 1:20 - 1:50
Molecular Weight:	27kDa
Purification:	Aff. Pur.
Synonyms:	CDKN1B;CDKN4;KIP1;MEN1B;MEN4;P27KIP1;p27 KIP 1

Background:

This gene encodes a cyclin-dependent kinase inhibitor, which shares a limited similarity with CDK inhibitor CDKN1A/p21. The encoded protein binds to and prevents the activation of cyclin E-CDK2 or cyclin D-CDK4 complexes, and thus controls the cell cycle progression at G1. The degradation of this protein, which is triggered by its CDK dependent phosphorylation and subsequent ubiquitination by SCF complexes, is required for the cellular transition from quiescence to the proliferative state. Mutations in this gene are associated with multiple endocrine neoplasia type IV (MEN4).

Form:

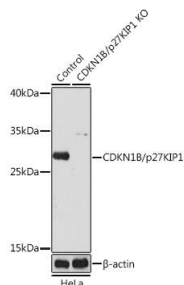
Liquid

Buffer:

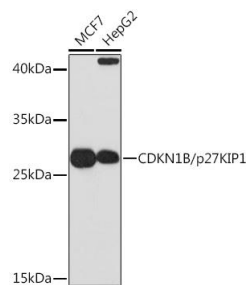
PBS with 0.02% sodium azide, 50% glycerol, pH7.3

Storage:

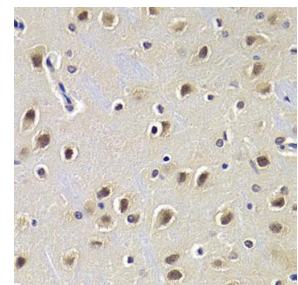
Store at -20°C. Avoid freeze / thaw cycles.



Western blot analysis of extracts from normal (control) and CDKN1B/p27KIP1 knockout (KO) HeLa cells, using CDKN1B/p27KIP1 antibody at 1:1000 dilution.
Secondary antibody: HRP Goat Anti-Rabbit IgG (H+L) at 1:10000 dilution.
Lysates/proteins: 25ug per lane.

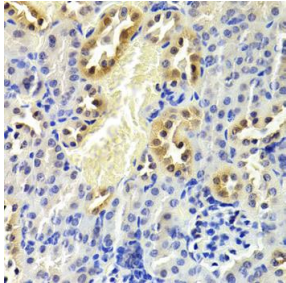


Western blot analysis of extracts of various cell lines, using CDKN1B/p27KIP1 Rabbit pAb at 1:1000 dilution.
Secondary antibody: HRP Goat Anti-Rabbit IgG (H+L) at 1:10000 dilution.
Lysates/proteins: 25ug per lane.
Blocking buffer: 3% nonfat dry milk in TBST.



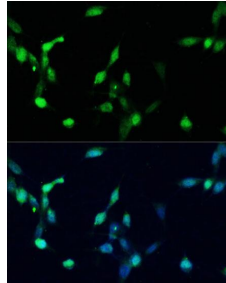
Immunohistochemistry of paraffin embedded rat brain using CDKN1B/p27KIP1 Antibody at dilution of 1:200 (40x lens).

Blocking buffer: 3% nonfat dry milk in TBST.
Detection: ECL West Pico Plus.
Exposure time: 3min.

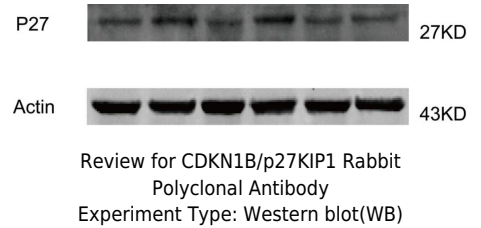


Immunohistochemistry of paraffin embedded mouse kidney using CDKN1B/p27KIP1 Antibody at dilution of 1:200 (40x lens).

Detection: ECL West Pico Plus.
Exposure time: 3min.



Immunofluorescence analysis of NIH/3T3 cells using p27 KIP 1 antibody at dilution of 1:100.
Blue: DAPI for nuclear staining.



References

References for CDKN1B/p27KIP1 Rabbit pAb

Product: CDKN1B/p27KIP1 Rabbit pAb

Journal: Journal of agricultural and food chemistry

Application: WB

IF: 3.41

Species: Homo sapiens

PMID: 30507186

Title: Nobiletin down-regulates c-KIT gene expression and exerts anti-leukemic effects on human acute myeloid leukemia cells.

References for CDKN1B/p27KIP1 Rabbit pAb

Product: CDKN1B/p27KIP1 Rabbit pAb

Journal: Experimental and Molecular Medicine

Application: WB, IHC

IF: 5.061

Species: Mus musculus

PMID: 28642576

Title: Upregulation of miR-223 in the rat liver inhibits proliferation of hepatocytes under simulated microgravity

References for CDKN1B/p27KIP1 Rabbit pAb

Product: CDKN1B/p27KIP1 Rabbit pAb

Journal: Cells

Application: WB

IF: 5.65

Species: Homo sapiens

PMID: 32260160

Title: Nobiletin Promotes Megakaryocytic Differentiation through the MAPK/ERK-Dependent EGR1 Expression and Exerts Anti-Leukemic Effects in Human Chronic Myeloid Leukemia (CML) K562 Cells

References for CDKN1B/p27KIP1 Rabbit pAb

Product: CDKN1B/p27KIP1 Rabbit pAb

Journal: Journal of Virology

Application: WB

IF:4.324

Species:Homo sapiens

PMID:27334596

Title:BZLF1 Attenuates Transmission of Inflammatory Paracrine Senescence in Epstein-Barr Virus-Infected Cells by Downregulating Tumor Necrosis Factor Alpha.

**For Research use only
IMMUNOLOGICAL SCIENCES**