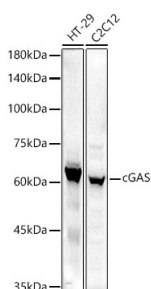
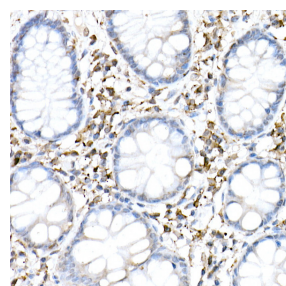


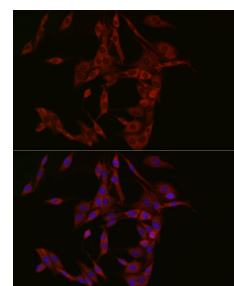
Cat. No:	MAB-94713
Conjugate:	Unconjugated
Size:	100 ug
Clone:	D1D3G
Concentration:	1mg/ml
Host:	Rb
Isotype:	IgG
Immunogen:	Recombinant fusion protein containing a sequence corresponding to amino acids 400-522 of human cGAS
Reactivity:	Hu, Ms, Rt
Applications:	WB 1:500 - 1:2000 IHC 1:50 - 1:200 IF 1:50-1:100 ICC 1:50 - 1:100
Molecular Weight:	62KDa
Purification:	Aff. Pur.
Synonyms:	MB21D1;C6orf150;cGAS;h-cGAS;CGAS
Background:	Nucleotidyltransferase that catalyzes the formation of cyclic GMP-AMP (cGAMP) from ATP and GTP and plays a key role in innate immunity. Catalysis involves both the formation of a 2',5' phosphodiester linkage at the GpA step and the formation of a 3',5' phosphodiester linkage at the ApG step, producing c[G(2',5')pA(3',5')p]. Acts as a key cytosolic DNA sensor, the presence of double-stranded DNA (dsDNA) in the cytoplasm being a danger signal that triggers the immune responses. Binds cytosolic DNA directly, leading to activation and synthesis of cGAMP, a second messenger that binds to and activates TMEM173/STING, thereby triggering type-I interferon production.
Form:	Liquid
Buffer:	PBS with 0.02% sodium azide,50% glycerol,pH7.3.
Storage:	Store at -20°C. Avoid freeze / thaw cycles.



Western blot analysis of extracts of



Immunohistochemistry of



Immunofluorescence analysis of PC-12

various cell lines, using cGAS antibody at 1:1000 dilution. Secondary antibody: HRP Goat Anti-Rabbit IgG (H+L) at 1:10000 dilution.
Lysates/proteins: 25ug per lane.
Blocking buffer: 3% nonfat dry milk in TBST.
Detection: ECL Enhanced Kit.
Exposure time: 60s.

paraffinembedded human colon using Cgas Rabbit MAb at dilution of 1:50 (40x lens)

cells using cGAS Rabbit MAb at dilution of 1:50 (40x lens). Blue: DAPI for nuclear staining.