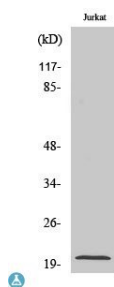
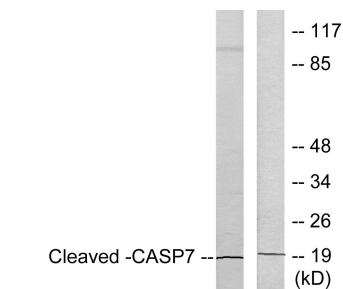


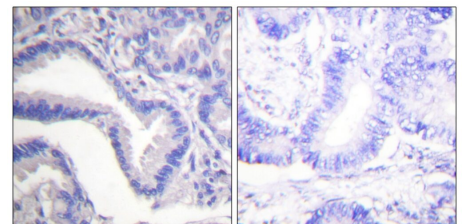
Cat. No:	AB-J532
Size:	100ug
Clone:	POLY
Concentration:	1mg/ml
Host:	Rb
Isotype:	IgG
Immunogen:	Synthesized peptide derived from human Caspase-7 p20
Reactivity:	Hu, Ms
Applications:	Western Blot: 1:500-1:2000 Immunohistochemistry: 1:100-1:300 ELISA: 1:5000
Molecular Weight:	20kDa
Purification:	The antibody was affinity-purified from rabbit antiserum by affinity chromatography using epitope-specific immunogen.
Synonyms:	Caspase-7 CASP-7 Apoptotic protease Mch-3 CMH-1 ICE-like apoptotic protease 3 ICE-LAP3 Caspase-7 subunit p20 Caspase-7 subunit p11
Background:	Specificity: Cleaved-Caspase-7 p20 (Asp198) Polyclonal Antibody detects endogenous levels of fragment of activated Caspase-7 p20 protein resulting from cleavage adjacent to Asp198. Tissue Specificity: Highly expressed in lung, skeletal muscle, liver, kidney, spleen and heart, and moderately in testis. No expression in the brain.
Form:	Liquid
Buffer:	Liquid in PBS containing 50% glycerol, 0.5% BSA and 0.02% sodium azide.
Storage:	Store at -20°C, and avoid repeat freeze-thaw cycles.



Western Blot (WB) analysis of specific cells using Cleaved-Caspase-7 p20 (Asp198) polyclonal antibody.



Western blot analysis of lysates from Jurkat cells, treated with Etoposide 25uM 24h, using Cleaved -Caspase 7 p20 (Asp198) Antibody. The lane is blocked with the synthesized peptide.



Immunohistochemistry analysis of paraffin-embedded human lung carcinoma tissue, using Cleaved-Caspase 7 p20(Asp198) Antibody. The picture is blocked with the synthesized peptide.

**For Research use only
IMMUNOLOGICAL SCIENCES**