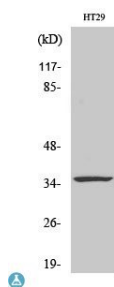
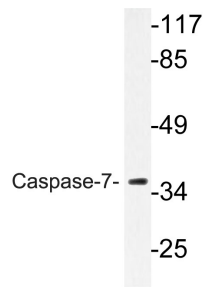


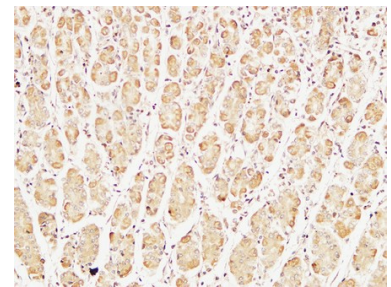
<b>Cat. No:</b>	AB-84215
<b>Size:</b>	100 ug
<b>Clone:</b>	POLY
<b>Concentration:</b>	1mg/ml
<b>Host:</b>	Rb
<b>Isotype:</b>	IgG
<b>Immunogen:</b>	Synthesized peptide derived from human Caspase-7.
<b>Reactivity:</b>	Hu
<b>Applications:</b>	Western Blot: 1:500-1:2000 Immunohistochemistry: 1:100-1:300 Immunocytochemistry: 1:200-1:100 ELISA: 1:5000
<b>Molecular Weight:</b>	35kDa
<b>Purification:</b>	The antibody was affinity-purified from rabbit antiserum by affinity chromatography using epitope-specific immunogen.
<b>Synonyms:</b>	Caspase-7 CASP-7 Apoptotic protease Mch-3 CMH-1 ICE-like apoptotic protease 3 ICE-LAP3 Caspase-7 subunit p20 Caspase-7 subunit p11
<b>Background:</b>	Specificity: Caspase-7 Polyclonal Antibody detects endogenous levels of Caspase-7 protein. Tissue Specificity: Highly expressed in lung, skeletal muscle, liver, kidney, spleen and heart, and moderately in testis. No expression in the brain.
<b>Form:</b>	Liquid
<b>Buffer:</b>	Liquid in PBS containing 50% glycerol, 0.5% BSA and 0.02% sodium azide.
<b>Storage:</b>	Store at -20°C, and avoid repeat freeze-thaw cycles.



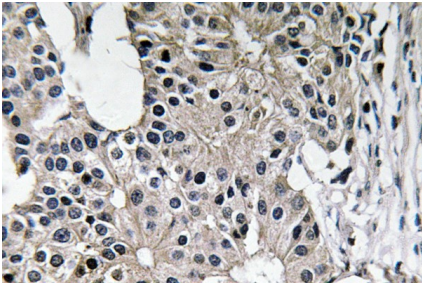
Western Blot (WB) analysis of specific cells using Caspase-7 polyclonal antibody.



Western blot analysis of lysate from HT-29 cells, using Caspase-7 antibody.



Immunohistochemical analysis of paraffin-embedded Human stomach. 1, Antibody was diluted at 1:400(4°, overnight). 2, High-pressure and temperature EDTA, pH8.0 was used for antigen retrieval. 3, Secondary antibody was diluted at 1:200(room temperature, 30min).



Immunohistochemistry analysis of  
Caspase-7 antibody in paraffin-  
embedded human breast carcinoma  
tissue.

**For Research use only  
IMMUNOLOGICAL SCIENCES**