

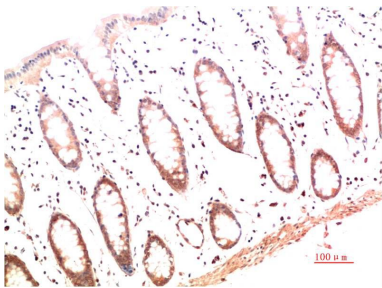
| | |
|--------------------------|-------------------------------------|
| Cat. No: | MAB-94772 |
| Conjugate: | Unconjugated |
| Size: | 100 ug |
| Clone: | 4B5 |
| Concentration: | 1mg/ml |
| Host: | Mouse |
| Isotype: | IgG1 |
| Immunogen: | Synthetic Peptide |
| Reactivity: | Human, Mouse, Rat |
| Applications: | Immunohistochemistry:1/100-200 |
| Molecular Weight: | 139kDa |
| Purification: | Affinity purification |
| Synonyms: | Alpha type I collagen COL1A1 COL1A3 |

Background: Type collagen is a trimeric complex comprised of two molecules of COL1A1 (alpha-1 type collagen) and one molecule of COL1A2 (alpha-2 type collagen). The expression levels of COL1A1 are regulated by multiple mechanisms including mRNA stability translation and posttranslational modification.

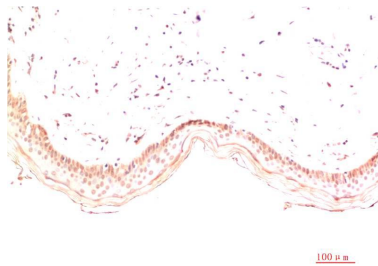
Form: Liquid

Buffer: PBS with 0.02% sodium azide and 50% glycerol pH 7.4.

Storage: Store at -20°C. Avoid repeated freeze-thaw cycles.



Immunohistochemical analysis of paraffin-embedded Human Colon Carcinoma Tissue using Collagen I Mouse mAb diluted at:200.



Immunohistochemical analysis of paraffin-embedded Human Skin Tissue using Collagen I Mouse mAb diluted at:200.

**For Research use only
IMMUNOLOGICAL SCIENCES**