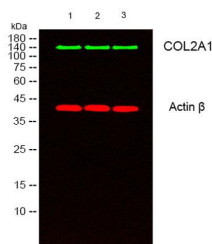
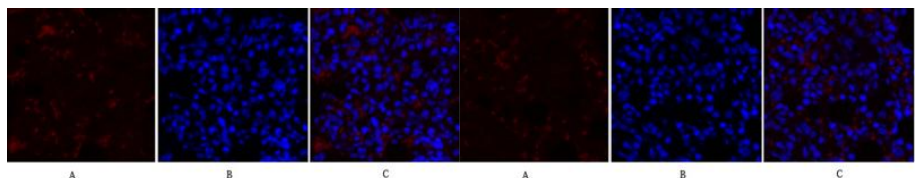


Cat. No:	AB-84753
Conjugate:	Unconjugated
Size:	100 ug
Clone:	POLY
Concentration:	1mg/ml
Host:	Rabbit
Isotype:	IgG
Immunogen:	The antiserum was produced against synthesized peptide derived from human Collagen II. AA range:101-150
Reactivity:	Human, Mouse, Rat
Applications:	Western Blot: 1/500 - 1/2000 Immunohistochemistry: 1/100 - 1/300 Immunofluorescence: 1/200 - 1/1000 ELISA:1/20000.
Molecular Weight:	140 kDa
Purification:	The antibody was affinity-purified from rabbit antiserum by affinity-chromatography using epitope-specific immunogen.
Synonyms:	COL2A1; Collagen alpha-1(II) chain; Alpha-1 type II collagen
Background:	This gene encodes the alpha-1 chain of type II collagen, a fibrillar collagen found in cartilage and the vitreous humor of the eye. Mutations in this gene are associated with achondrogenesis, chondrodysplasia, early onset familial osteoarthritis, SED congenita, Langer-Saldino achondrogenesis, Kniest dysplasia, Stickler syndrome type I, and spondyloepimetaphyseal dysplasia Strudwick type. In addition, defects in processing chondrocalcin, a calcium binding protein that is the C-propeptide of this collagen molecule, are also associated with chondrodysplasia. There are two transcripts identified for this gene.
Form:	Liquid
Buffer:	Liquid in PBS containing 50% glycerol, 0.5% BSA and 0.02% sodium azide.
Storage:	Store at -20°C. Avoid repeated freeze-thaw cycles.



Western blot analysis of lysates from 1) k562, 2) COLO205,3) MCF-7 cells, Green \square primary antibody was diluted at 1:1000, 4° over night, secondary antibody was diluted at 1:10000, 37°



Immunofluorescence analysis of rat-lung tissue.

1, COL2A1 Polyclonal Antibody (red) was diluted at 1:200 (4°C, overnight).
2, Cy3 labeled Secondary antibody was diluted at 1:300 (room temperature, 50min).
3, Picture B: DAPI (blue) 10min.
Picture A: Target.

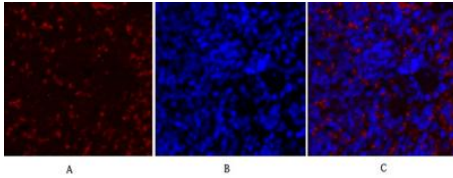
Immunofluorescence analysis of rat-lung tissue.

1, COL2A1 Polyclonal Antibody (red) was diluted at 1:200 (4°C, overnight).
2, Cy3 labeled Secondary antibody was diluted at 1:300 (room temperature, 50min).
3, Picture B: DAPI (blue) 10min. Picture

1hour.
Red \square Actin β Monoclonal Antibody(5B7)

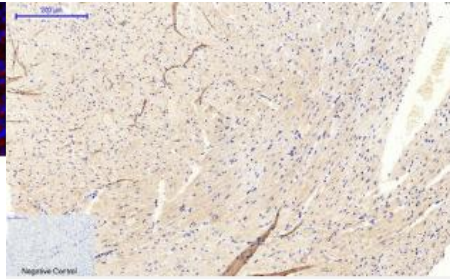
Picture B: DAPI.
Picture C: merge of A+B

A:Target. Picture



Immunofluorescence analysis of rat-spleen tissue.

- 1,COL2A1 Polyclonal Antibody(red) was diluted at 1:200(4°C,overnight).
- 2, Cy3 labeled Secondary antibody was diluted at 1:300(room temperature, 50min).
- 3, Picture B: DAPI(blue) 10min.
Picture A:Target.
Picture B: DAPI.
Picture C: merge of A+B



Immunohistochemical analysis of paraffin-embedded Mouse-heart tissue.

- 1,COL2A1 Polyclonal Antibody was diluted at 1:200(4°C,overnight).
 - 2, Sodium citrate pH 6.0 was used for antibody retrieval(>98 ° C,20min).
 - 3,Secondary antibody was diluted at 1:200(room temperature, 30min).
- Negative control was used by secondary antibody only.