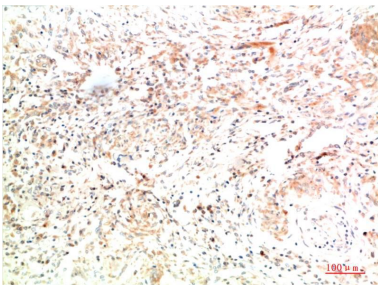


Cat. No:	MAB-94773
Conjugate:	Unconjugated
Size:	100 ug
Clone:	8F6
Concentration:	1mg/ml
Host:	Mouse
Isotype:	IgG1
Immunogen:	Synthetic Peptide
Reactivity:	Human Mouse Rat
Applications:	Immunohistochemistry:1/100-200
Molecular Weight:	142 kDa
Purification:	Affinity purification
Synonyms:	Alpha type II collagen AOM Col2a1 antibody

Background: Collagens are fibrous extracellular matrix proteins with high tensile strength and are the major components of connective tissue such as tendons and cartilage. In cartilage Collagen Type II constitutes the bulk of the fibril. Sensitization with Collagen Type II induces an erosive polyarthritis in rats mice and higher primates which can resemble rheumatoid arthritis and relapsing polychondritis.

Form:	Liquid
Buffer:	PBS with 0.02% sodium azide and 50% glycerol pH 7.4.
Storage:	Store at -20°C. Avoid repeated freeze-thaw cycles.



Immunohistochemical analysis of paraffin-embedded Human Lung Carcinoma Tissue using Collagen II Mouse mAb diluted at:200.

**For Research use only
IMMUNOLOGICAL SCIENCES**