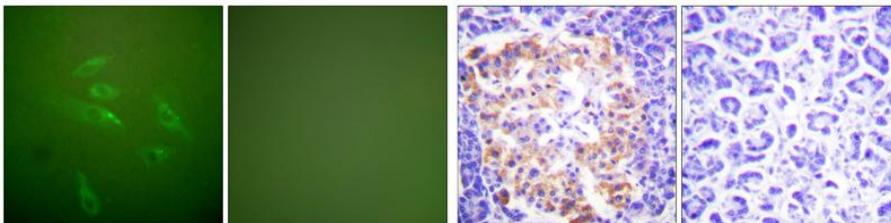


Cat. No:	AB-E5927
Conjugate:	Unconjugated
Size:	100 ug
Clone:	POLY
Concentration:	1mg/ml
Host:	Rabbit
Isotype:	IgG
Immunogen:	The antiserum was produced against synthesized peptide derived from human Collagen III. AA range:81-130
Reactivity:	Human;Mouse;Rat
Applications:	Immunohistochemistry: 1/100 - 1/300 Immunofluorescence: 1/200 - 1/1000
Purification:	The antibody was affinity-purified from rabbit antiserum by affinity-chromatography using epitope-specific immunogen.
Synonyms:	COL3A1; Collagen alpha-1(III) chain
Background:	collagen type III alpha 1 chain(COL3A1) Homo sapiens This gene encodes the pro-alpha1 chains of type III collagen, a fibrillar collagen that is found in extensible connective tissues such as skin, lung, uterus, intestine and the vascular system, frequently in association with type I collagen. Mutations in this gene are associated with Ehlers-Danlos syndrome types IV, and with aortic and arterial aneurysms. Two transcripts, resulting from the use of alternate polyadenylation signals, have been identified for this gene.
Form:	Liquid
Buffer:	Liquid in PBS containing 50% glycerol, 0.5% BSA and 0.02% sodium azide.
Storage:	Store at -20°C. Avoid repeated freeze-thaw cycles.



Immunofluorescence analysis of HeLa cells, using Collagen III Antibody. The picture on the right is blocked with the synthesized peptide.

Immunohistochemistry analysis of paraffin-embedded human pancreas tissue, using Collagen III Antibody. The picture on the right is blocked with the synthesized peptide.

**For Research use only
IMMUNOLOGICAL SCIENCES**