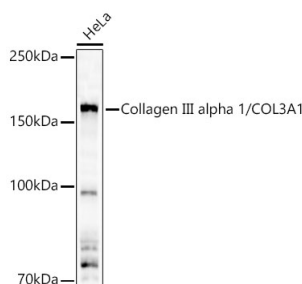
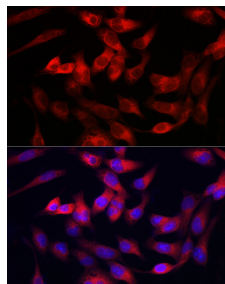


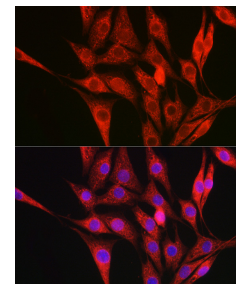
<b>Cat. No:</b>	AB-82620
<b>Conjugate:</b>	Unconjugated
<b>Size:</b>	100 ug
<b>Clone:</b>	POLY
<b>Concentration:</b>	1mg/ml
<b>Host:</b>	Rabbit
<b>Isotype:</b>	IgG
<b>Immunogen:</b>	Recombinant fusion protein containing a sequence corresponding to amino acids 1201-1301 of human Collagen III alpha 1/COL3A1.
<b>Reactivity:</b>	Hu , Ms
<b>Applications:</b>	Western Blot: 1:2000 - 1:10000 Immunofluorescence: 1:50 - 1:200 Immunocytochemistry: 1:50 - 1:200
<b>Molecular Weight:</b>	150kDa
<b>Purification:</b>	Affinity purification
<b>Synonyms:</b>	EDS4A; EDSVASC; PMGEDSV; Collagen III alpha 1/COL3A1
<b>Background:</b>	This gene encodes the pro-alpha1 chains of type III collagen, a fibrillar collagen that is found in extensible connective tissues such as skin, lung, uterus, intestine and the vascular system, frequently in association with type I collagen. Mutations in this gene are associated with Ehlers-Danlos syndrome type IV, and with aortic and arterial aneurysms.
<b>Form:</b>	Liquid
<b>Buffer:</b>	PBS with 0.02% sodium azide, 50% glycerol, pH 7.3.
<b>Storage:</b>	Store at -20°C. Avoid freeze / thaw cycles.



Western blot analysis of lysates from HeLa cells using Collagen III alpha 1/COL3A1 Rabbit pAb at 1:10000 dilution.  
Secondary antibody: HRP Goat Anti-Rabbit IgG (H+L) at 1:10000 dilution.  
Lysates/proteins: 25 µg per lane.  
Blocking buffer: 3% nonfat dry milk in TBST.  
Detection: ECL West Pico Plus.  
Exposure time: 90s.



Immunofluorescence analysis of RD cells using Collagen III alpha 1/COL3A1 Rabbit pAb at dilution of 1:100.  
Secondary antibody: Cy3 Goat Anti-Rabbit IgG (H+L) (AS007) at 1:500 dilution.  
Blue: DAPI for nuclear staining.



Immunofluorescence analysis of NIH/3T3 cells using Collagen III alpha 1/COL3A1 Rabbit pAb at dilution of 1:100.  
Secondary antibody: Cy3 Goat Anti-Rabbit IgG (H+L) at 1:500 dilution.  
Blue: DAPI for nuclear staining.



**Product Data Sheet:  
Collagen III alpha 1/COL3A1 Rabbit Polyclonal  
Antibody**

**For Research use only  
IMMUNOLOGICAL SCIENCES**