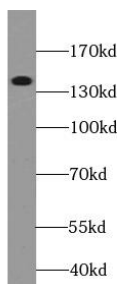


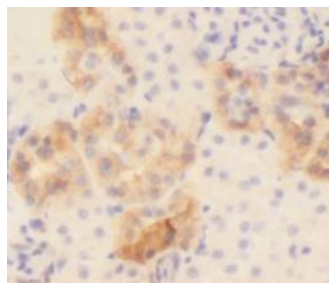
Cat. No:	AB-84738
Conjugate:	Unconjugated
Size:	100 ug
Clone:	POLY
Concentration:	1mg/ml
Host:	Rabbit
Isotype:	IgG
Immunogen:	collagen, type VI, alpha 1
Reactivity:	Human, Mouse, Rat
Applications:	Western Blot: 1:500-1:1000 Immunoprecipitation: 1:500-1:1000 Immunohistochemistry: 1:50-1:200 Immunofluorescence: 1:20-1:200
Molecular Weight:	140 kDa
Purification:	Immunogen affinity purified
Synonyms:	COL6A1, collagen 6A1, Collagen alpha 1(VI) chain, collagen, type VI, alpha 1, OPLL

Background: Type VI Collagen is a major structural component of microfibrils. Type VI Collagen was found to be present throughout the connective tissue and in the extracellular matrix of cultured fibroblasts (PMID: 6723253). It is a heterotrimer composed of three different chains: alpha-1(VI), alpha-2(VI), and alpha-3(VI) or alpha-5(VI) or alpha-6(VI). The alpha-1(VI) chain is encoded by COL6A1 gene. Mutations in this gene result in Bethlem myopathy and Ullrich congenital muscular dystrophy.

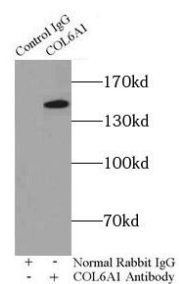
Form:	Liquid
Buffer:	PBS with 0.02% sodium azide and 50% glycerol pH 7.3.
Storage:	Store at -20°C for 12 months (Avoid repeated freeze / thaw cycles.)



human heart tissue were subjected to SDS PAGE followed by western blot with COL6A1 Antibody at dilution of 1:600



Immunohistochemistry of paraffin-embedded human kidney using COL6A1 antibody at dilution of 1:100



IP Result of anti-Collagen Type VI (IP: 4ug; Detection: 1:500) with mouse heart tissue lysate 8000ug.

**For Research use only
IMMUNOLOGICAL SCIENCES**