

Cat. No:	MAB-94388
Conjugate:	Unconjugated
Size:	100 ug
Clone:	6E8
Concentration:	1mg/ml
Host:	Mouse
Isotype:	IgG1
Immunogen:	Recombinant netrin domain of human C3
Reactivity:	Human
Applications:	Western Blot: 1:1,000-1:5,000
Molecular Weight:	185kDa
Purification:	Purified

Background:

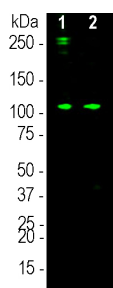
Complement component 3, often simply called C3, is the third protein in the complement system. The complement system “complements” the ability of antibodies and phagocytic cells to clear pathogens such as bacteria and viruses from the organism and can trigger inflammation and remove debris from cells and tissues. C3 is involved in both the classical and alternative pathway. The MCA-6E8 antibody binds to the netrin-like domain in the α subunit of human C3.

Form:

Liquid

Buffer:Purified antibody at 1mg/mL in 50% PBS, 50% glycerol plus 5mM Na₃**Storage:**

Store at 4°C for short term, for longer term at -20°C



Western blot analysis of 6E8 on human serum samples. 0.1 μ g purified human C3 protein (lane 1) and 10 μ g normal human serum protein (lane 2) were blotted with Complement C3 α -chain at a concentration 1:3,000. The Complement C3 α -chain monoclonal binds strongly and cleanly to a band at about 115kDa which represents the intact α subunit of C3 and a weaker proteolytic band at approximately 40kDa. Bands at 190kDa and above are likely the pro-C3 and its glycosylated form.

**For Research use only
IMMUNOLOGICAL SCIENCES**