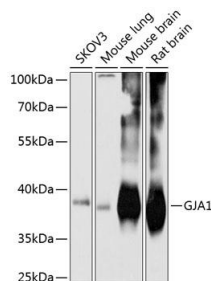
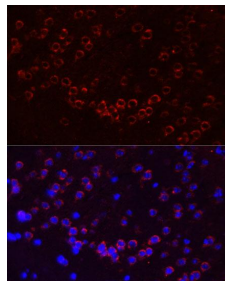


Cat. No:	AB-90007
Size:	100 ug
Clone:	POLY
Concentration:	1mg/ml
Host:	Rb
Isotype:	IgG
Immunogen:	Recombinant fusion protein containing a sequencem corresponding to amino acids 233-382 of human Connexin43.
Reactivity:	Hu, Rt, Ms
Applications:	Western Blot: 1:500 - 1:2000 Immunofluorescence: 1:50 - 1:200
Molecular Weight:	38kDa
Purification:	Aff. Pur.
Synonyms:	GJA1;AVSD3;CMDR;CX43;EKVP;GJAL;HLHS1;HSS;ODDD; PPKCA;EKVP3
Background:	This gene is a member of the connexin gene family. The encoded protein is a component of gap junctions, which are composed of arrays of intercellular channels that provide a route for the diffusion of low molecular weight materials from cell to cell. The encoded protein is the major protein of gap junctions in the heart that are thought to have a crucial role in the synchronized contraction of the heart and in embryonic development. A related intronless pseudogene has been mapped to chromosome 5. Mutations in this gene have been associated with oculodentodigital dysplasia, autosomal recessive craniometaphyseal dysplasia and heart malformations.
Form:	Liquid
Buffer:	PBS with 0.02% sodium azide,50% glycerol ,pH7.3.
Storage:	Store at -20°C. Avoid freeze / thaw cycles.



Western blot analysis of extracts of various cell lines, using GJA1 antibody at 1:1000 dilution.
Secondary antibody: HRP Goat Anti-Rabbit IgG (H+L) at 1:10000 dilution.
Lysates/proteins: 25ug per lane.
Blocking buffer: 3% nonfat dry milk in TBST.
Detection: ECL West Pico Plus.



Immunofluorescence analysis of mouse brain using Connexin43 Polyclonal Antibody at dilution of 1:100 (40x lens).
Blue: DAPI for nuclear staining.

Exposure time: 10s.

**For Research use only
IMMUNOLOGICAL SCIENCES**