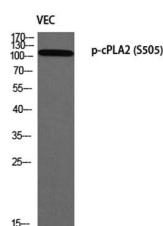
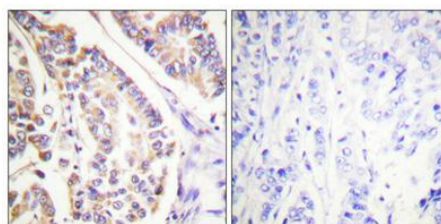


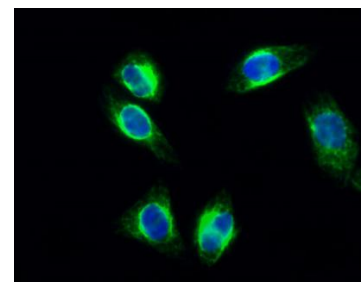
<b>Cat. No:</b>	ABP10275
<b>Conjugate:</b>	Unconjugated
<b>Size:</b>	100 ug
<b>Clone:</b>	POLY
<b>Concentration:</b>	1mg/ml
<b>Host:</b>	Rabbit
<b>Isotype:</b>	IgG
<b>Immunogen:</b>	The antiserum was produced against synthesized peptide derived from human c-PLA2 around the phosphorylation site of Ser505. AA range:471-520
<b>Reactivity:</b>	Human,Mouse,Rat
<b>Applications:</b>	Western Blot: 1/500 - 1/2000. Immunohistochemistry: 1/100 - 1/300. Immunofluorescence: 1/200 - 1/1000.
<b>Molecular Weight:</b>	110kD
<b>Purification:</b>	The antibody was affinity-purified from rabbit antiserum by affinity-chromatography using epitope-specific immunogen.
<b>Synonyms:</b>	PLA2G4A; CPLA2; PLA2G4; Cytosolic phospholipase A2; cPLA2; Phospholipase A2 group IVA
<b>Background:</b>	This gene encodes a member of the cytosolic phospholipase A2 group IV family. The enzyme catalyzes the hydrolysis of membrane phospholipids to release arachidonic acid which is subsequently metabolized into eicosanoids. Eicosanoids, including prostaglandins and leukotrienes, are lipid-based cellular hormones that regulate hemodynamics, inflammatory responses, and other intracellular pathways. The hydrolysis reaction also produces lysophospholipids that are converted into platelet-activating factor. The enzyme is activated by increased intracellular Ca(2+) levels and phosphorylation, resulting in its translocation from the cytosol and nucleus to perinuclear membrane vesicles. Alternative splicing results in multiple transcript variants.
<b>Form:</b>	Liquid
<b>Buffer:</b>	Liquid in PBS containing 50% glycerol, 0.5% BSA and 0.02% sodium azide.
<b>Storage:</b>	Store at -20°C. Avoid repeated freeze-thaw cycles.



Western blot analysis of VEC using p-cPLA2 (S505)antibody. Antibody was



Immunohistochemical analysis of paraffin-embedded Human breast cancer. Antibody was diluted at 1:100(4° overnight). High-pressure and



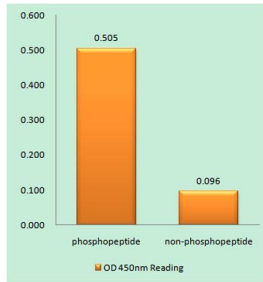
Immunofluorescence analysis of Hela cell.



diluted at 1:1000

temperature  
Tris-EDTA, pH 8.0 was used for antigen  
retrieval.

1, cPLA2 (phospho Ser505) Polyclonal  
Antibody (green) was diluted at 1:200 (4°  
overnight).  
2, Goat Anti Rabbit Alexa Fluor 488 was  
diluted at 1:1000 (room temperature,  
50 min).  
3 DAPI (blue) 10 min.



Enzyme-Linked Immunosorbent Assay  
(Phospho-ELISA) for Immunogen  
Phosphopeptide (Phospho-left) and Non-  
Phosphopeptide (Phospho-right), using c-  
PLA2  
(Phospho-Ser505) Antibody

**For Research use only  
IMMUNOLOGICAL SCIENCES**