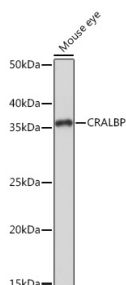


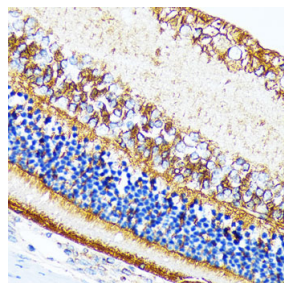
<b>Cat. No:</b>	MAB-94793
<b>Conjugate:</b>	Unconjugated
<b>Size:</b>	100 ug
<b>Clone:</b>	ARC1502
<b>Concentration:</b>	1mg/ml
<b>Host:</b>	Rabbit
<b>Isotype:</b>	IgG
<b>Immunogen:</b>	A synthetic peptide corresponding to a sequence within amino acids 1-100 of human CRALBP
<b>Reactivity:</b>	Human, Mouse, Rat Western Blot: 1:500 - 1:2000
<b>Applications:</b>	Immunohistochemistry(paraffin-embedded tissues): 1:50 - 1:200 Immunofluorescence: 1:50 - 1:200 Immunocytochemistry: 1:50 - 1:200
<b>Molecular Weight:</b>	36kDa
<b>Purification:</b>	Affinity purification
<b>Synonyms:</b>	CRALBP
<b>Background:</b>	The protein encoded by this gene is a 36-kD water-soluble protein which carries 11-cisretinaldehyde or 11-cis-retinal as physiologic ligands. It may be a functional component of the visual cycle. Mutations of this gene have been associated with severe rod-cone dystrophy, Bothnia dystrophy (nonsyndromic autosomal recessive retinitis pigmentosa) and retinitis punctata albescens.
<b>Form:</b>	Liquid
<b>Buffer:</b>	36kDa
<b>Storage:</b>	Store at -20°C. Avoid repeated freeze-thaw cycles.



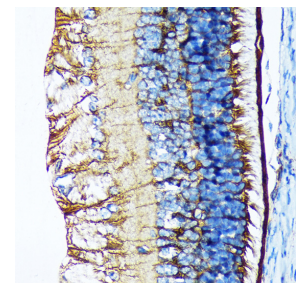
Western blot analysis of extracts of Mouse eye, using CRALBP Rabbit mAb at 1:1000 dilution.

Secondary antibody: HRP Goat Anti-Rabbit IgG (H+L) at 1:10000 dilution.  
Lysates/proteins: 25µg per lane.  
Blocking buffer: 3% nonfat dry milk in TBST.

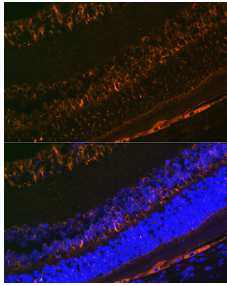
Detection: ECL West Pico Plus.  
Exposure time: 1s.



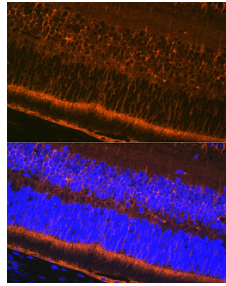
Immunohistochemistry analysis of paraffin-embedded rat retina using CRALBP Rabbit mAb at dilution of n1:100 (40x lens). Perform microwave antigen retrieval with 10 mM Tris/EDTA buffer pH 9.0 before commencing with IHC staining protocol.



Immunohistochemistry analysis of paraffin-embedded mouse retina using CRALBP Rabbit mAb at dilution of 1:100 (40x lens). Perform microwave antigen retrieval with 10 mM Tris/EDTA buffer pH 9.0 before commencing with IHC staining protocol.



Immunofluorescence analysis of rat eye using CRALBP Rabbit mAb at dilution of 1:100 (40x lens).  
Blue: DAPI for nuclear staining.



Immunofluorescence analysis of mouse eye using CRALBP Rabbit mAb at dilution of 1:100 (40x lens).  
Blue: DAPI for nuclear staining.