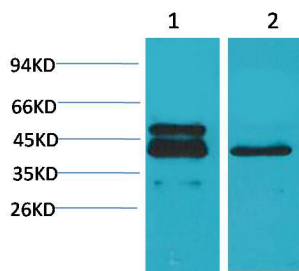
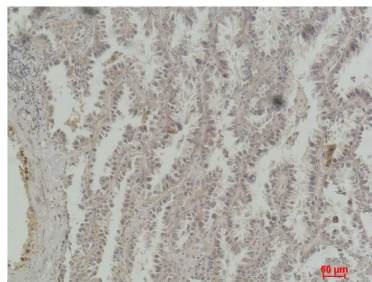


Cat. No:	MAB-94882
Conjugate:	Unconjugated
Size:	100 ug
Clone:	CR09
Concentration:	1mg/ml
Host:	Mouse
Isotype:	IgG
Immunogen:	Recombinant Protein
Reactivity:	Human, Mouse
Applications:	WesternBlot:1/500-1000 Immunohistochemistry:1/100-200
Molecular Weight:	43kDa
Purification:	Affinity purification
Synonyms:	Cyclic AMP-responsive element binding protein antibody MGC9284 antibody CREB1 antibody.
Background:	CREB (cAMP response element-binding protein) is a cellular transcription factor. This protein binds the cAMP response element (CRE) a sequence present in many viral and cellular promoters. CREB is closely related in structure and function to CREM (cAMP response element modulator) and ATF-1 (activating transcription factor-1) proteins. CREB proteins are expressed in many animals.
Form:	Liquid
Buffer:	PBS with 0.02% sodium azide and 50% glycerol pH 7.4.
Storage:	Store at -20°C. Avoid repeated freeze-thaw cycles.



Western blot analysis of) A431 2)3T3
with CREB Mouse mAb diluted at:2000.



Immunohistochemical analysis of
paraffin-embedded Human Lung
Carcinoma using CREB Mouse mAb
diluted at:200.

**For Research use only
IMMUNOLOGICAL SCIENCES**