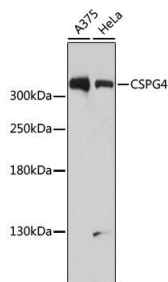


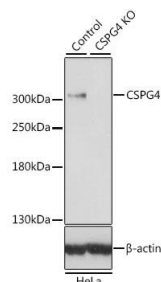
Cat. No:	AB-84322
Size:	100 ug
Clone:	POLY
Concentration:	1mg/ml
Host:	Rb
Isotype:	IgG
Immunogen:	Recombinant fusion protein containing a sequence corresponding to amino acids 1950-2210 of human CSPG4.
Reactivity:	Hu, Ms, Rt
Applications:	Western Blot: 1:500 - 1:2000 Immunofluorescence: 1:50 - 1:200
Molecular Weight:	320kDa
Purification:	Aff. Pur.
Synonyms:	CSPG4;HMW-MAA;MCSP;MCSPG;MEL-CSPG;MSK16;NG2
Background:	A human melanoma-associated chondroitin sulfate proteoglycan plays a role in stabilizing cell-substratum interactions during early events of melanoma cell spreading on endothelial basement membranes. CSPG4 represents an integral membrane chondroitin sulfate proteoglycan expressed by human malignant melanoma cells.
Form:	Liquid
Buffer:	PBS with 0.02% sodium azide,50% glycerol,pH7.3.
Storage:	Store at -20°C. Avoid freeze / thaw cycles.



Western blot analysis of extracts of various cell lines, using CSPG4 antibody at 1:1000 dilution.

Secondary antibody: HRP Goat Anti-Rabbit IgG (H+L) at 1:10000 dilution.
Lysates/proteins: 25ug per lane.
Blocking buffer: 3% nonfat dry milk in TBST.

Detection: ECL West Pico Plus.
Exposure time: 90s.



Western blot analysis of extracts from normal (control) and CSPG4 knockout (KO) HeLa cells, using CSPG4 antibody at 1:500 dilution.

Secondary antibody: HRP Goat Anti-Rabbit IgG (H+L) at 1:10000 dilution.
Lysates/proteins: 25ug per lane.
Blocking buffer: 3% nonfat dry milk in TBST.

Detection: ECL West Pico Plus.
Exposure time: 10s.

References

References for [KO Validated] CSPG4 Rabbit pAb
Product:[KO Validated] CSPG4 Rabbit pAb
Journal:Nature
Application:WB, IF
IF:43.07
Species:Mus musculus
PMID:32581380
Title:Reversing a Model of Parkinson's Disease With in Situ Converted Nigral Neurons

**For Research use only
IMMUNOLOGICAL SCIENCES**