

Cat. No: AB-84282
Size: 100ug
Clone: POLY
Concentration: 1mg/ml
Host: Rb
Isotype: IgG
Reactivity: Hu, Ms, Rt
Applications: Western blotting: 1:1000
 Immunohistochemistry: 1:100

Molecular Weight: 35kDa

Purification: Polyclonal antibody is produced by immunizing animals with a synthetic peptide corresponding to residues surrounding Val174 of human CTGF protein.

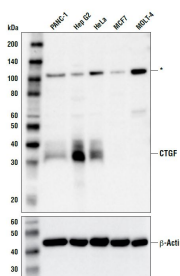
Background:

Connective tissue growth factor (CTGF, CCN2) belongs to the CCN (CYR61, CTGF, NOV) family of secreted extracellular matrix (ECM) proteins (1). Members of this family contain four conserved cysteine-rich domains, and interact in the ECM with a diverse array of cell surface receptors, including integrins and heparin-sulfate proteoglycans (2). These interactions regulate a multitude of cellular and tissue functions, including adhesion, proliferation, migration, differentiation, senescence, angiogenesis, inflammation, and wound repair (1, 3-5). The CTGF gene is a transcriptional target of both YAP/TAZ and TGFβ-SMAD signaling pathways (6,7), and aberrant regulation of CTGF expression is strongly associated with pathological conditions, notably cancer and fibrosis (8, 9). CTGFRabbit pAb recognizes endogenous levels of total CTGF protein. By Western blot analysis, the antibody detects a 120 kDa protein of unknown identity in both CTGF-positive and CTGF-negative cell lines.

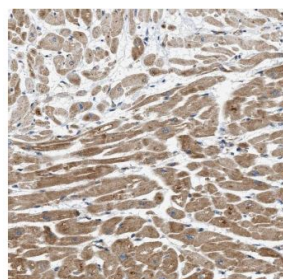
Form: Liquid

Buffer: PBS with 0.02% sodium azide and 50% glycerol pH 7.3

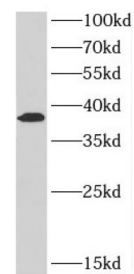
Storage: T -20°C for 12 months(Avoid repeated freeze / thaw cycles.)



Western blot analysis of extracts from various cell lines using CTGF Rabbit pAb (upper) and β-actin (D6A8) Rabbit B Actin (lower). Asterisk indicates a 120 kDa band of unknown identity detected by this



Immunohistochemistry of paraffin-embedded human colon cancer tissue slide using CTGF Antibody at dilution of 1:200 heat mediated antigen retrieved with Tris-EDTA buffer (pH9) .



Mouse heart tissue were subjected to SDS PAGE followed by western blot with CTGF Antibody at dilution of 1:600

antibody in Western blot analysis.

References

- (1) Chen, C.C. and Lau, L.F. (2009) *Int J Biochem Cell Biol* 41, 771-83.
- (2) Gao, R. and Brigstock, D.R. (2004) *J Biol Chem* 279, 8848-55.
- (3) Hall-Glenn, F. and Lyons, K.M. (2011) *Cell Mol Life Sci* 68, 3209-17.
- (4) Hashimoto, G. et al. (2002) *J Biol Chem* 277, 36288-95.
- (5) Ivkovic, S. et al. (2003) *Development* 130, 2779-91.
- (6) Di Benedetto, A. et al. (2016) *Oncotarget* 7, 43188-43198.
- (7) Liu, H. et al. (2015) *Cell Biochem Biophys* 73, 775-81.
- (8) Brigstock, D.R. (2010) *J Cell Commun Signal* 4, 1-4.
- (9) Jun, J.I. and Lau, L.F. (2011) *Nat Rev Drug Discov* 10, 945-63.

**For Research use only
IMMUNOLOGICAL SCIENCES**