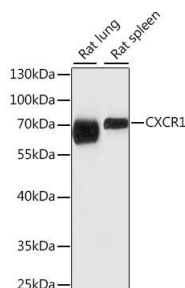


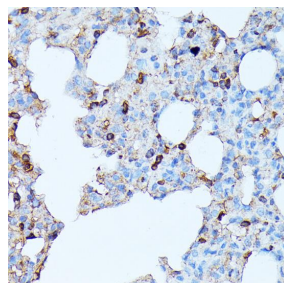
<b>Cat. No:</b>	AB-82066
<b>Conjugate:</b>	Unconjugated
<b>Size:</b>	100 µg
<b>Clone:</b>	POLY
<b>Concentration:</b>	1mg/ml
<b>Host:</b>	Rb
<b>Isotype:</b>	IgG
<b>Immunogen:</b>	A synthetic peptide corresponding to a sequence within amino acids 250-350 of human CXCR1.
<b>Reactivity:</b>	Hu
<b>Applications:</b>	Western Blot: 1:500 - 1:2000 Immunohistochemistry: 1:50 - 1:200
<b>Molecular Weight:</b>	70kDa
<b>Purification:</b>	Aff.Pur.
<b>Synonyms:</b>	CXCR1;C-C;C-C-CKR-1;CD128;CD181;CDw128a;CKR-1; CMKAR1;IL8R1;IL8RA;IL8RBA

**Background:** The protein encoded by this gene is a member of the G-protein-coupled receptor family. This protein is a receptor for interleukin 8 (IL8). It binds to IL8 with high affinity, and transduces the signal through a G-protein activated second messenger system. Knockout studies in mice suggested that this protein inhibits embryonic oligodendrocyte precursor migration in developing spinal cord. This gene, IL8RB, a gene encoding another high affinity IL8 receptor, as well as IL8RBP, a pseudogene of IL8RB, form a gene cluster in a region mapped to chromosome 2q33-q36

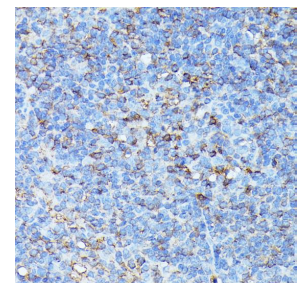
<b>Form:</b>	Liquid
<b>Buffer:</b>	PBS with 0.02% sodium azide,50% glycerol,pH7.3.
<b>Storage:</b>	Store at -20°C. Avoid freeze / thaw cycles.



Western blot analysis of extracts of various cell lines, using CXCR1 antibody at 1:1000 dilution.  
Secondary antibody: HRP Goat Anti-Rabbit IgG (H+L) at 1:10000 dilution.  
Lysates/proteins: 25ug per lane.  
Blocking buffer: 3% nonfat dry milk in TBST.

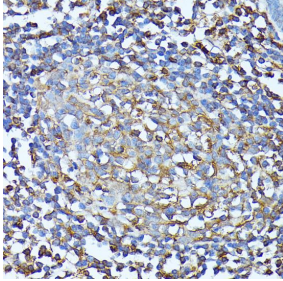


Immunohistochemistry of paraffin embedded rat lung using CXCR1 antibody at dilution of 1:100 (40x lens).



Immunohistochemistry of paraffin embedded mouse spleen using CXCR1 antibody at dilution of 1:100 (40x lens).

Detection: ECL West Pico Plus.  
Exposure time: 15s.



Immunohistochemistry of  
paraffinembedded  
human colon using CXCR1  
antibody at dilution of 1:100  
(40x lens).

**For Research use only  
IMMUNOLOGICAL SCIENCES**