

**Cat. No:** AB-83811  
**Conjugate:** Unconjugated  
**Size:** 100 ug  
**Clone:** POLY  
**Concentration:** 1mg/ml  
**Host:** Rabbit  
**Isotype:** IgG  
**Immunogen:** Synthetic Peptide of CXCR4 AA range: 203-253  
**Reactivity:** Human, Mouse, Rat  
**Applications:** Western Blot: 1:1000-2000  
 Immunohistochemistry: 1:100-200  
**Molecular Weight:** 50kD

**Purification:** The antibody was affinity-purified from rabbit antiserum by affinity-chromatography using epitope-specific immunogen.

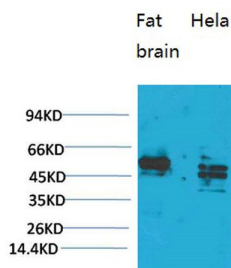
**Synonyms:** CXCR4; C-X-C chemokine receptor type 4; CXC-R4; CXCR-4; FB22; Fusin; HM89; LCR1; Leukocyte-derived seven transmembrane domain receptor; LESTR; NPYRL; Stromal cell-derived factor 1 receptor; SDF-1 receptor; CD antigen CD184

**Background:** C-X-C motif chemokine receptor 4(CXCR4) Homo sapiens This gene encodes a CXC chemokine receptor specific for stromal cell-derived factor-1. The protein has 7 transmembrane regions and is located on the cell surface. It acts with the CD4 protein to support HIV entry into cells and is also highly expressed in breast cancer cells. Mutations in this gene have been associated with WHIM (warts, hypogammaglobulinemia, infections, and myelokathexis) syndrome. Alternate transcriptional splice variants, encoding different isoforms, have been characterized.

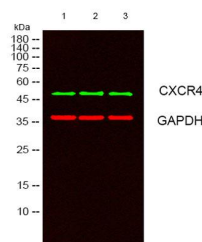
**Form:** Liquid

**Buffer:** Liquid in PBS containing 50% glycerol, 0.5% BSA and 0.02% sodium azide.

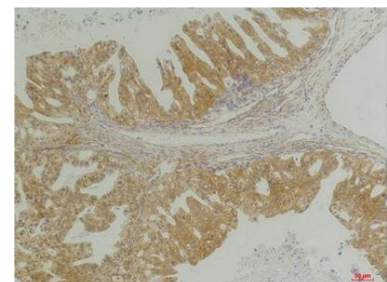
**Storage:** Store at -20°C. Avoid repeated freeze-thaw cycles.



Western blot analysis of 1) Rat Brain Tissue, 2) HeLa, with CXCR4 Rabbit pAb diluted at 1:1,000.

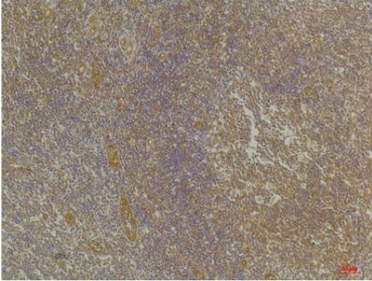


Western blot analysis of lysates from 1) Rat Brain Tissue, 2) HeLa, 3) HEK293 cells, (Green) primary antibody was diluted at 1:1000, 4° over night, secondary antibody Dk x Rb was diluted at 1:10000, 37° 1 hour. (Red) GAPDH Monoclonal Antibody(2B8)



Immunohistochemical analysis of paraffin-embedded Human Breast Carcinoma using CXCR4 Rabbit pAb diluted at 1:200.

antibody was diluted at 1:5000 as loading control, 4° overnight, secondary antibody (Gt x Ms was diluted at 1:10000, 37° 1hour.



Immunohistochemical analysis of paraffin-embedded Human Tonsil Tissue using CXCR4Rabbit pAb diluted at 1:200.

**For Research use only  
IMMUNOLOGICAL SCIENCES**