

Cat. No: AB-84201
Size: 100ug
Clone: POLY
Concentration: 1mg/ml
Host: Rb
Isotype: IgG
Immunogen: Synthesized peptide derived from human Cyclin A
Reactivity: Hu, Ms,Rt, Sm

Applications: Western Blot: 1:500-1:2000
 Immunohistochemistry: 1:100-1:300
 Immunofluorescence: 1:200-1:1000
 ELISA: 1:10000

Molecular Weight: 53kDa

Purification: The antibody was affinity-purified from rabbit antiserum by affinitychromatography using epitope-specific immunogen.

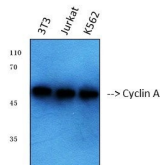
Background:

Cyclin A is a protein encoded by the CCNA1 gene which is approximately 52,3 kDa. Cyclin A is localised to the nucleus. It is involved in CDKmediated phosphorylation, removal of Cdc6, DNA double-strand break repair and cellular senescence. It functions as a regulator of CDK kinases. Different cyclins exhibit distinct expression and degradation patterns which contribute to the temporal coordination of each mitotic event. This protein's primarily function is in the control of the germline meiotic cell cycle. Cyclin A is very highly expressed in the testis. Mutations in the CCNA1 gene may result in myeloid leukemia. STJ92532 was affinitypurified from rabbit antiserum by affinity-chromatography using epitope specific immunogen. This polyclonal antibody detects endogenous levels May be involved in the control of the cell cycle at the G1/S (start) and G2/M (mitosis) transitions. May primarily function in the control of the germline meiotic cell cycle and additionally in the control of mitotic cell cycle in some somatic cells.

Form: Liquid

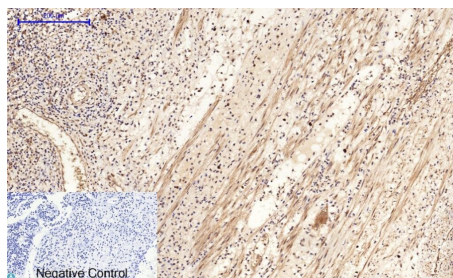
Buffer: PBS with 0.02% sodium azide,50% glycerol,pH7.3.

Storage: Store at -20°C. Avoid freeze / thaw cycles.



Western Blot (WB) analysis of 1. 3T3 2. Jurkat 3. K562 using Cyclin A Polyclonal Antibody (STJ92532)

Western blot (WB) analysis of Cyclin A polyclonal antibody.



Immunohistochemical analysis of human-appendix tissue. Anti-Cyclin A at 1:200 (4°C, overnight). Antigen retrieval - Sodium Citrate pH6 (>98°C, 20min).

Secondary - 1:200 (room temp, 30min).
Negative control - Secondary only

**For Research use only
IMMUNOLOGICAL SCIENCES**