

Cat. No:	AB-82626
Conjugate:	Unconjugated
Size:	100ug
Clone:	POLY
Concentration:	1mg/ml
Host:	Rabbit
Isotype:	IgG
Immunogen:	Recombinant Protein
Reactivity:	Hu , Ms, Rt
Applications:	WesternBlot:1/1000-2000 Immunohistochemistry:1/200-5000
Molecular Weight:	55kDa
Purification:	Aff. Pur.
Synonyms:	CCNB1 antibody, G2 mitotic specific cyclin B1 antibody

Background:

Cyclin B1 is a regulatory protein involved in mitosis. The gene product complexes with p34 (Cdk1) to form the maturation-promoting factor (MPF). Two alternative transcripts have been found, a constitutively expressed transcript and a cell cycle-regulated transcript that is expressed predominantly during G2/M phase of the cell cycle.

Form:

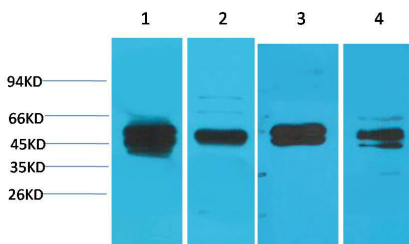
Liquid

Buffer:

PBS with 0.02% sodium azide and 50% glycerol pH 7.4.

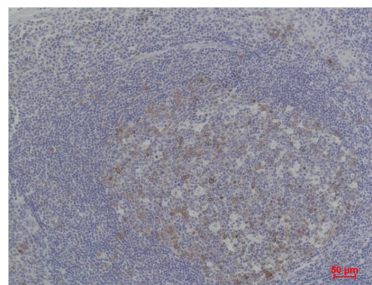
Storage:

Store at -20°C. Avoid repeated freeze-thaw cycles.



Western blot analysis of

1) Jurkat,
2) Hela,
3) C2C12,
4) Rat Liver Tissue
with Cyclin B1 Rabbit pAb EA244 diluted
at 1:2,000.



Immunohistochemical analysis of
paraffin-embedded Human Tonsil
Carcinoma using Cyclin B1
(EA244 Rabbit pAb diluted at 1:500.

**For Research use only
IMMUNOLOGICAL SCIENCES**