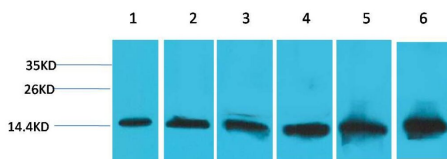
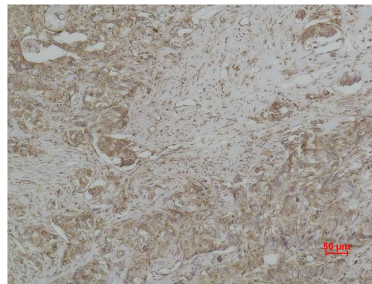


Cat. No:	MAB-94695
Conjugate:	Unconjugated
Size:	100 ug
Clone:	6H2.B4
Concentration:	1mg/ml
Host:	Ms
Isotype:	IgG1
Immunogen:	Recombinant protein containing a sequence of human Cytochrome C
Reactivity:	Hu, Ms, Rt
Applications:	WesternBlot: 1:000 Immunohistochemistry: 1:500
Molecular Weight:	14kDa
Purification:	Aff. Pur.
Synonyms:	CYC; CYCS; HCS; THC4; Cytochrome C somatic
Background:	The cytochrome complex or cyt c is a small hemeprotein found loosely associated with the inner membrane of the mitochondrion. It belongs to the cytochrome c family of proteins.
Form:	Liquid
Buffer:	PBS with 0.02% sodium azide and 50% glycerol pH 7.4.
Storage:	Store at -20°C. Avoid repeated freeze-thaw cycles.



Western blot analysis of 1) HeLa 2) 293T
3)3T3 4)Mouse Liver Tissue 5) Rat Liver
Tissue 6) Rat Kidney Tissue with
Cytochrome C Mouse Mab diluted at
1:2000.



Immunohistochemical analysis of
paraffin-embedded human Breast
carcinoma using Cytochrome C Mouse
MAb diluted at 1:500.

**For Research use only
IMMUNOLOGICAL SCIENCES**