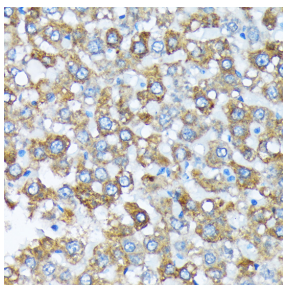


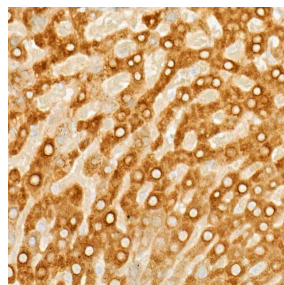
<b>Cat. No:</b>	MAB-94795
<b>Conjugate:</b>	Unconjugated
<b>Size:</b>	100 ug
<b>Clone:</b>	ARC58001
<b>Concentration:</b>	1mg/ml
<b>Host:</b>	Rabbit
<b>Isotype:</b>	IgG
<b>Immunogen:</b>	Recombinant fusion protein containing a sequence corresponding to amino acids 234-493 of human Cytochrome P450 2E1
<b>Reactivity:</b>	Human, Mouse, Rat
<b>Applications:</b>	Immunohistochemistry (paraffin-embedded tissues): 1:500 - 1:1000 Immunofluorescence: 1:50 - 1:200
<b>Molecular Weight:</b>	57kDa
<b>Purification:</b>	Affinity purification
<b>Synonyms:</b>	CPE1; CYP2E; P450-J; P450C2E

**Background:** This gene encodes a member of the cytochrome P450 superfamily of enzymes. The cytochrome P450 proteins are monooxygenases which catalyze many reactions involved in drug metabolism and synthesis of cholesterol, steroids and other lipids. This protein localizes to the endoplasmic reticulum and is induced by ethanol, the diabetic state, and starvation. The enzyme metabolizes both endogenous substrates, such as ethanol, acetone, and acetal, as well as exogenous substrates including benzene, carbon tetrachloride, ethylene glycol, and nitrosamines which are premutagens found in cigarette smoke. Due to its many substrates, this enzyme may be involved in such varied processes as gluconeogenesis, hepatic cirrhosis, diabetes, and cancer.

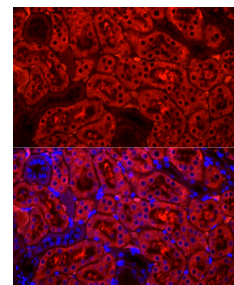
**Form:** Liquid  
**Buffer:** PBS with 0.05% proclin300,0.05% BSA,50% glycerol,pH7.3.  
**Storage:** Store at -20°C. Avoid freeze / thaw cycles.



Immunohistochemistry analysis of paraffin-embedded rat liver using Cytochrome P450 Rabbit mAb at dilution of 1:100 (40x lens). Perform microwave antigen retrieval with 10 mM Tris/EDTA buffer pH 9.0 before commencing with IHC staining protocol.



Immunohistochemistry analysis of paraffin-embedded rat liver using Cytochrome P450 2E1 (CYP2E1) Rabbit mAb at dilution of 1:800 (40xlens). Perform high pressure antigen retrieval with 10 mM citrate buffer pH 6.0 before commencing with IHC staining



Immunofluorescence analysis of mouse kidney using Cytochrome P450 2E1 (CYP2E1) Rabbit mAb at dilution of 1:100 (40x lens).  
Blue: DAPI for nuclear staining.

protocol.

**For Research use only  
IMMUNOLOGICAL SCIENCES**