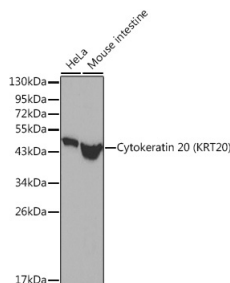
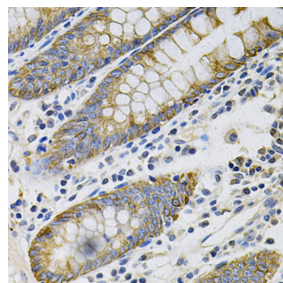


Cat. No:	AB-80682
Conjugate:	Unconjugated
Size:	100 ug
Clone:	POLY
Concentration:	1mg/ml
Host:	Rabbit
Isotype:	IgG
Immunogen:	Recombinant fusion protein containing a sequence corresponding to amino acids 245-424 of human Cytokeratin 20 (KRT20).
Reactivity:	Hu,Ms,Rt Western Blot: 1:500 - 1:2000 Immunohistochemistry (paraffin-embedded tissues): 1:50 - 1:100 Immunofluorescence: 1:50 - 1:200 Immunocytochemistry: 1:50 - 1:200
Applications:	
Molecular Weight:	48kDa
Purification:	Affinity purification
Synonyms:	K20; CD20; CK20; CK-20; KRT21
Background:	The protein encoded by this gene is a member of the keratin family. The keratins are intermediate filament proteins responsible for the structural integrity of epithelial cells and are subdivided into cytokeratins and hair keratins. The type I cytokeratins consist of acidic proteins which are arranged in pairs of heterotypic keratin chains. This cytokeratin is a major cellular protein of mature enterocytes and goblet cells and is specifically expressed in the gastric and intestinal mucosa. The type I cytokeratin genes are clustered in a region of chromosome 17q12-q21.
Form:	Liquid
Buffer:	PBS with 0.02% sodium azide,50% glycerol,pH7.3.
Storage:	Store at -20°C. Avoid freeze / thaw cycles.

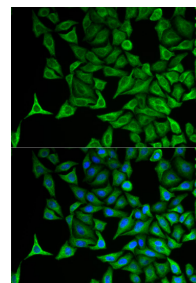


Western blot analysis of extracts of various cell lines, using Cytokeratin 20 (Cytokeratin 20 (KRT20)) antibody.

Secondary antibody: HRP Goat Anti-Rabbit IgG (H+L) at 1:10000 dilution.
Lysates/proteins: 25µg per lane.
Blocking buffer: 3% nonfat dry milk in



Immunohistochemistry analysis of paraffin-embedded Human colon using Cytokeratin 20 (Cytokeratin 20 (KRT20)) antibody at dilution of 1:100 (40x lens). Perform microwave antigen retrieval with 10 mM PBS buffer pH 7.2 before



Immunofluorescence analysis of HeLa cells using Cytokeratin 20 (Cytokeratin 20 (KRT20)) antibody.
Blue: DAPI for nuclear staining.

TBST.

commencing with IHC staining protocol.

**For Research use only
IMMUNOLOGICAL SCIENCES**