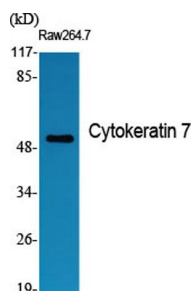
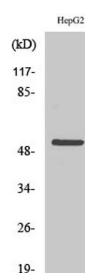


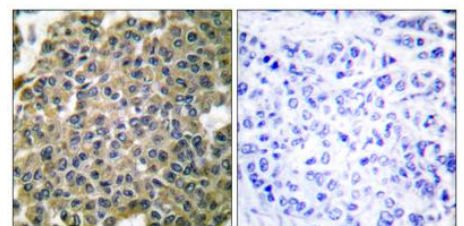
Cat. No:	AB-80677
Conjugate:	Unconjugated
Size:	100 ug
Clone:	POLY
Concentration:	1mg/ml
Host:	Rabbit
Isotype:	IgG
Immunogen:	The antiserum was produced against synthesized peptide derived from human Keratin 7. AA range:420-469
Reactivity:	Hu,Ms, Rt
Applications:	Western Blot: 1/500 - 1/2000 Immunohistochemistry: 1/100 - 1/300 Immunofluorescence: 1/200 - 1/1000 ELISA: 1/40000.
Molecular Weight:	51kD
Purification:	The antibody was affinity-purified from rabbit antiserum by affinity-chromatography using epitope-specific immunogen.
Synonyms:	KRT7; SCL; Keratin; type II cytoskeletal 7; Cytokeratin-7; CK-7; Keratin-7; K7; Sarcolectin; Type-II keratin Kb7
Background:	keratin 7(KRT7) Homo sapiens The protein encoded by this gene is a member of the keratin gene family. The type II cytokeratins consist of basic or neutral proteins which are arranged in pairs of heterotypic keratin chains coexpressed during differentiation of simple and stratified epithelial tissues. This type II cytokeratin is specifically expressed in the simple epithelia lining the cavities of the internal organs and in the gland ducts and blood vessels. The genes encoding the type II cytokeratins are clustered in a region of chromosome 12q12-q13. Alternative splicing may result in several transcript variants; however, not all variants have been fully described.
Form:	Liquid
Buffer:	Liquid in PBS containing 50% glycerol, 0.5% BSA and 0.02% sodium azide.
Storage:	Store at -20°C. Avoid repeated freeze-thaw cycles.



Western Blot analysis of various cells using Cytokeratin 7 Polyclonal Antibody

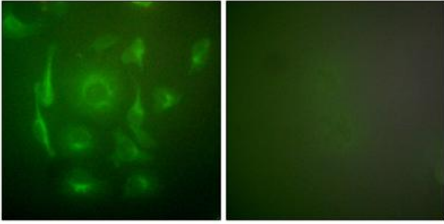


Western Blot analysis of HepG2 cells using Cytokeratin 7 Polyclonal Antibody



Western Blot analysis of HepG2 cells using Cytokeratin 7 Polyclonal Antibody diluted at 1:1000

diluted at 1:1000



diluted at 1:1000

Immunofluorescence analysis of HepG2 cells, using Keratin 7 Antibody. The picture on the right is blocked with the synthesized peptide.

**For Research use only
IMMUNOLOGICAL SCIENCES**