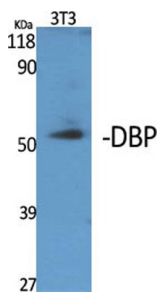
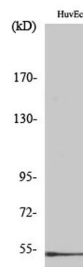


Cat. No:	AB-E6500
Conjugate:	unconjugated
Size:	100 ug
Clone:	Polyclonal
Concentration:	1mg/ml
Host:	Rabbit
Isotype:	IgG
Immunogen:	Synthesized peptide derived from DBP . at AA range: 90-170
Reactivity:	Human, Monkey
Applications:	Western Blot 1:500- 1:2000 Elisa 1:40000
Molecular Weight:	55kd
Purification:	affinity purified
Synonyms:	GC; Vitamin D-binding protein; DBP; VDB; Gc-globulin; Group-specific component
Background:	The protein encoded by this gene belongs to the albumin gene family. It is a multifunctional protein found in plasma, ascitic fluid, cerebrospinal fluid and on the surface of many cell types. It binds to vitamin D and its plasma metabolites and transports them to target tissues.
Form:	Liquid
Buffer:	PBS containing 50% glycerol, 0.5% BSA and 0.02% sodium azide
Storage:	Store at -20°C. Avoid repeated freeze-thaw cycles.



Western Blot analysis of various cells using DBP Polyclonal Antibody with a dilution 1:500 -1:1000



Western Blot analysis of various cells using DBP Polyclonal antibody at a dilution 1:500-1:1000

**For Research use only
IMMUNOLOGICAL SCIENCES**