

Cat. No: AB-J738
Size: 100ug
Clone: POLY
Concentration: 1mg/ml
Host: Rb
Isotype: IgG
Immunogen: Synthesized peptide derived from human DDR1.
Reactivity: Hu, Ms, Rt
Applications: Western Blot: 1:500-2000
ELISA: 1:10000-20000

Molecular Weight: 130kDa

Purification: The antibody was affinity-purified from rabbit antiserum by affinity chromatography using epitope-specific immunogen.

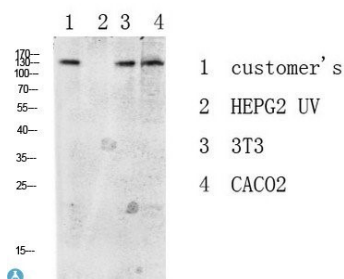
Synonyms: Epithelial discoidin domain-containing receptor 1 Epithelial discoidin domain receptor 1 CD167 antigen-like family member A Cell adhesion kinase Discoidin receptor tyrosine kinase HGK2 Mammary carcinoma kinase 10

Background: Tyrosine kinase that functions as cell surface receptor for fibrillar collagen and regulates cell attachment to the extracellular matrix, remodeling of the extracellular matrix, cell migration, differentiation, survival and cell proliferation. Collagen binding triggers a signaling pathway that involves SRC and leads to the activation of MAP kinases. Regulates remodeling of the extracellular matrix by up-regulation of the matrix metalloproteinases MMP2, MMP7 and MMP9, and thereby facilitates cell migration and wound healing. Required for normal blastocyst implantation during pregnancy, for normal mammary gland differentiation and normal lactation. Required for normal ear morphology and normal hearing. Promotes smooth muscle cell migration, and thereby contributes to arterial wound healing. Also plays a role in tumor cell invasion. Phosphorylates PTPN11.

Form: Liquid

Buffer: Liquid in PBS containing 50% glycerol, 0.5% BSA and 0.02% sodium azide.

Storage: Store at -20°C. Avoid freeze / thaw cycles.



Western blot analysis of various lysate,
antibody was diluted at 1000. Secondary
antibody was diluted at 1: 20000.

**For Research use only
IMMUNOLOGICAL SCIENCES**