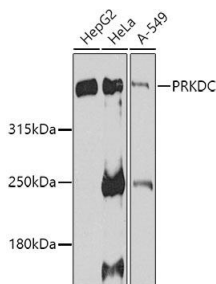
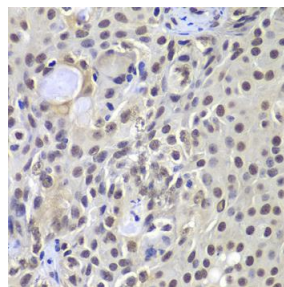


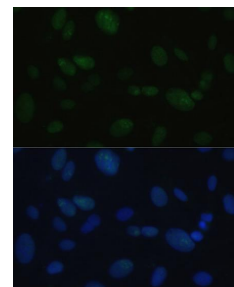
<b>Cat. No:</b>	AB-83872
<b>Size:</b>	100 ug
<b>Clone:</b>	POLY
<b>Concentration:</b>	1mg/ml
<b>Host:</b>	Rb
<b>Isotype:</b>	IgG
<b>Immunogen:</b>	A synthetic peptide of human DNA-PKCS
<b>Reactivity:</b>	Hu, Ms
<b>Applications:</b>	Western Blot: 1:500 -1:2000 Immunohistochemistry: 1:50 - 1:200 Immunofluorescence: 1:50 - 1:200
<b>Molecular Weight:</b>	469kDa
<b>Purification:</b>	Aff. Pur.
<b>Synonyms:</b>	DNA-PKCS; DNA-PKcs; DNAPK; DNPk1; HYRC; HYRC1; IM D26; XRCC7; p350; DNA-dependent protein kinase catalytic subunit
<b>Background:</b>	This gene encodes the catalytic subunit of the DNA-dependent protein kinase (DNAPK). It functions with the Ku70/Ku80 heterodimer protein in DNA double strand break repair and recombination.
<b>Form:</b>	Liquid
<b>Buffer:</b>	PBS with 0.02% sodium azide, 50% glycerol, pH7.3.
<b>Storage:</b>	Store at -20°C. Avoid freeze / thaw cycles.



Western blot analysis of extracts of various cell lines, using DNA-PKCS antibody at 1:1000 dilution. Secondary antibody: HRP Goat Anti-Rabbit IgG (H+L) at 1:10000 dilution. Lysates/proteins: 25ug per lane. Blocking buffer: 3% nonfat dry milk in TBST. Detection: ECL West Pico Plus. Exposure time: 90s.



Immunohistochemistry of paraffin-embedded human well-differentiated squamous skin carcinoma using DNA-PKCS antibody at dilution of 1:100 (40x lens).



Immunofluorescence analysis of U-2OS cells using DNA-PKCS antibody at dilution of 1:100. Blue: DAPI for nuclear staining.

**For Research use only  
IMMUNOLOGICAL SCIENCES**