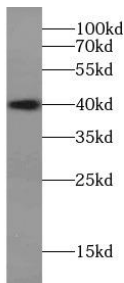
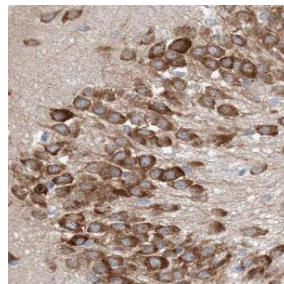


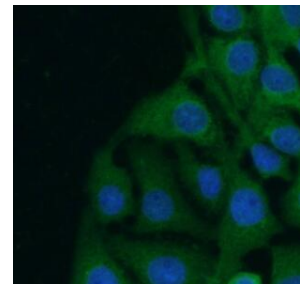
Cat. No:	AB-80651
Conjugate:	Unconjugated
Size:	100 ug
Clone:	POLY
Concentration:	1mg/ml
Host:	Rb
Isotype:	IgG
Immunogen:	doublecortin
Reactivity:	Hu, Ms, Rt
Applications:	Western Blot: 1:500-1:2000 Immunohistochemistry: 1:20-1:200 Immunofluorescence: 1:20-1:200
Molecular Weight:	40 kDa
Purification:	≥95% as determined by SDS-PAGE
Synonyms:	DBCN, DC, DCX, doublecortin, Doublin, Lis X, Lissencephalin X, LISX, SCLH, XLIS
Background:	Microtubule-associated protein required for initial steps of neuronal dispersion and cortex lamination during cerebral cortex development. May act by competing with the putative neuronal protein kinase DCLK1 in binding to a target protein. May in that way participate in a signaling pathway that is crucial for neuronal interaction before and during migration, possibly as part of a calcium ion-dependent signal transduction pathway. May be part with PAFAH1B1/LIS-1 of overlapping, but distinct, signaling pathways that promote neuronal migration.
Form:	Liquid
Buffer:	PBS with 0.02% sodium azide and 50% glycerol pH 7.3,
Storage:	Store -20°C for 12 months (Avoid repeated freeze / thaw cycles.)



human brain tissue were subjected to SDS PAGE followed by western blot with DCX antibody at dilution of 1:600



Immunohistochemistry of paraffin-embedded human testis using DCX antibody at dilution of 1:100



Immunofluorescent analysis of SH-SY5Y cells using DCX antibody at dilution of 1:50 and Alexa Fluor 488-conjugated Goat Anti-Rabbit IgG(H+L)

**For Research use only
IMMUNOLOGICAL SCIENCES**