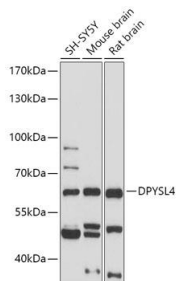


Cat. No:	AB-83901
Size:	100 ul
Clone:	POLY
Concentration:	1mg/ml
Host:	RB
Isotype:	IGG
Immunogen:	A synthetic peptide of Human DPYSL4.
Reactivity:	Hu, Ms, Rt
Applications:	Western Blot: 1:500 -1:1000
Molecular Weight:	62kDa
Purification:	Aff. Pur.
Synonyms:	CRMP3, DRP-4, ULIP4
Form:	Liquid
Buffer:	PBS with 0.02% sodium azide, 50% glycerol, pH7.3.
Storage:	Store at -20°C. Avoid freeze / thaw cycles.



Western blot analysis of extracts of various cell lines, using DPYSL4 antibody at 1:1000 dilution.

Secondary antibody: HRP Goat Anti-Rabbit IgG (H+L) at 1:10000 dilution.

Lysates/proteins: 25ug per lane.

Blocking buffer: 3% nonfat dry milk in TBST.

Detection: ECL West Pico.

Exposure time: 30s.

**For Research use only
IMMUNOLOGICAL SCIENCES**