

Cat. No: MAB-94733
Conjugate: Unconjugated
Size: 100 ug
Clone: DP10
Concentration: 1mg/ml
Host: Rabbit
Isotype: IgG
Immunogen: Synthesized peptide derived from DRP1 . at AA range: 580-660
Reactivity: Human,Mouse,Rat

Applications: Western Blot: 1/500 - 1/2000
 Immunofluorescence: 1:50-200
 Immunohistochemistry: 1/100 - 1/300

Molecular Weight: 80kD

Purification: The antibody was affinity-purified from rabbit antiserum by affinity-chromatography using epitope-specific immunogen.

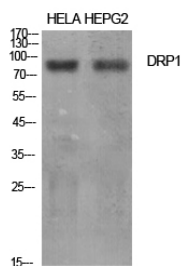
Synonyms: DNM1L; DLP1; DRP1; Dynamin-1-like protein; Dnm1p/Vps1p-like protein; DVLP; Dynamin family member proline-rich carboxyl-terminal domain less; Dymple; Dynamin-like protein; Dynamin-like protein 4; Dynamin-like protein IV; HdynIV; Dynamin-rela

Background: This gene encodes a member of the dynamin superfamily of GTPases. The encoded protein mediates mitochondrial and peroxisomal division, and is involved in developmentally regulated apoptosis and programmed necrosis. Dysfunction of this gene is implicated in several neurological disorders, including Alzheimer's disease. Mutations in this gene are associated with the autosomal dominant disorder, encephalopathy, lethal, due to defective mitochondrial and peroxisomal fission (EMPF). Alternative splicing results in multiple transcript variants encoding different isoforms.

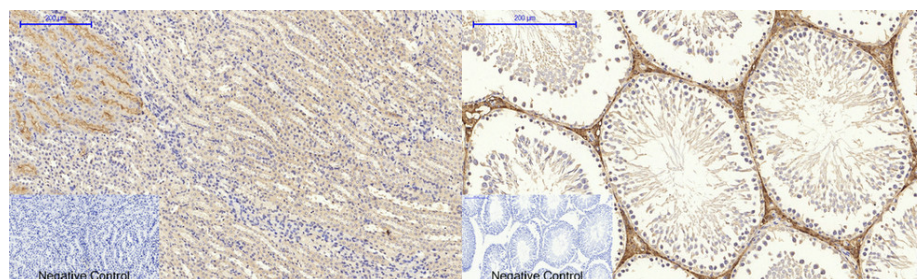
Form: Liquid

Buffer: Liquid in PBS containing 50% glycerol, 0.5% BSA and 0.02% sodium azide.

Storage: Store at -20°C. Avoid repeated freeze-thaw cycles.



Western Blot analysis of various cells using DRP1 Antibody diluted at 1:500

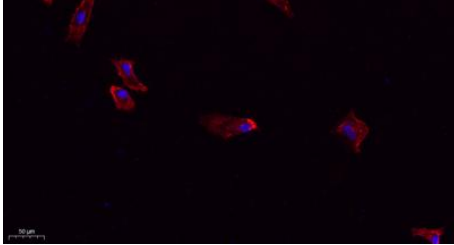


Immunohistochemical analysis of paraffin-embedded Mouse-kidney tissue.
 1, DRP1 Antibody was diluted at 1:200(4°C, overnight). 2, Sodium citrate pH 6.0 was used for antibody

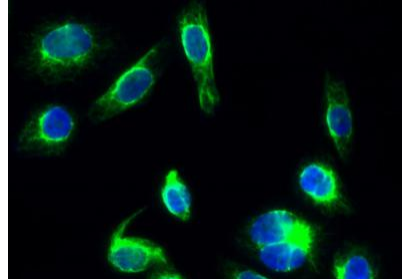
Immunohistochemical analysis of paraffin-embedded Rat-testis tissue.
 1, DRP1 Antibody was diluted at 1:200(4°C, overnight). 2, Sodium citrate pH 6.0 was used for antibody

retrieval(>98°C,20min). 3,Secondary antibody was diluted at 1:200(room temperature, 30min). Negative control was used by secondary antibody only.

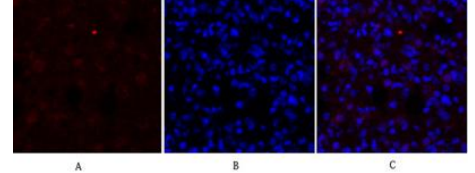
retrieval(>98°C,20min). 3,Secondary antibody was diluted at 1:200(room temperature, 30min). Negative control was used by secondary antibody only.



Immunofluorescence analysis of A549. 1,primary Antibody(red) was diluted at 1:200(4°C overnight). 2, Goat Anti Rabbit IgG (H&L) – Alexa Fluor 594 Secondary antibody was diluted at 1:1000(room temperature, 50min).3, Picture B: DAPI(blue) 10min.



Immunofluorescence analysis of HeLa cell. 1,DRP1 Antibody(green) was diluted at 1:200(4°C overnight). 2, Goat Anti Rabbit Alexa Fluor 488 was diluted at 1:1000(room temperature, 50min). 3 DAPI(blue) 10min.



Immunofluorescence analysis of rat-lung tissue. 1,DRP1 Antibody(red) was diluted at 1:200(4°C,overnight). 2, Cy3 labeled Secondary antibody was diluted at 1:300(room temperature, 50min).3, Picture B: DAPI(blue) 10min. Picture A:Target. Picture B