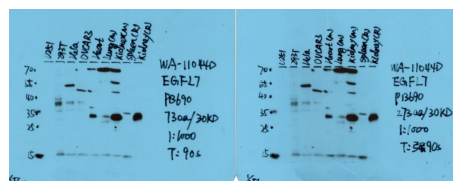
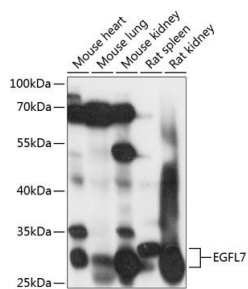


<b>Cat. No:</b>	AB-84120
<b>Conjugate:</b>	Unconjugated
<b>Size:</b>	100ug
<b>Clone:</b>	POLY
<b>Concentration:</b>	1mg/ml
<b>Host:</b>	Rb
<b>Isotype:</b>	IgG
<b>Immunogen:</b>	Recombinant fusion protein containing a sequence corresponding to amino acids 24-100 of human EGFL7
<b>Reactivity:</b>	Hu, Ms, Rt
<b>Applications:</b>	Western Blot: 1:1000
<b>Molecular Weight:</b>	30kDa
<b>Purification:</b>	Aff. Pur.
<b>Synonyms:</b>	EGFL7; NEU1; VE-STATIN; ZNEU1; EGF like domain multiple 7
<b>Background:</b>	This gene encodes a secreted endothelial cell protein that contains two epidermal growth factor-like domains. The encoded protein may play a role in regulating vasculogenesis. This protein may be involved in the growth and proliferation of tumor cells. Alternate splicing results in multiple transcript variants.
<b>Form:</b>	Liquid
<b>Buffer:</b>	PBS with 0.02% sodium azide, 50% glycerol, pH7.3.
<b>Storage:</b>	Store at -20°C, and avoid repeat freeze-thaw cycles.



Western blot analysis of extracts of various cell lines, using EGFL7 antibody at 1:1000 dilution.  
 Secondary antibody: HRP Goat Anti-Rabbit IgG (H+L) at 1:10000 dilution.  
 Lysates/proteins: 25ug per lane.  
 Blocking buffer: 3% nonfat dry milk in TBST.  
 Detection: ECL West Pico Plus  
 Exposure time: 10s.

**For Research use only  
IMMUNOLOGICAL SCIENCES**