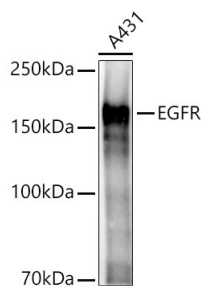
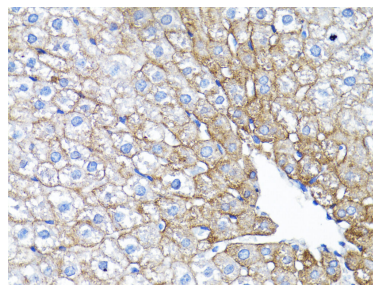


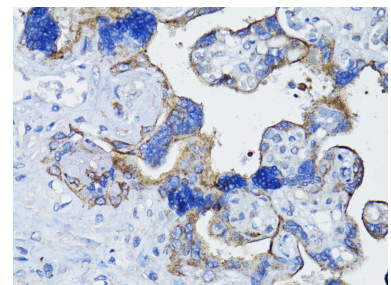
Cat. No:	AB-81864
Conjugate:	Unconjugated
Size:	100 ug
Clone:	POLY
Concentration:	1mg/ml
Host:	Rabbit
Isotype:	IgG
Immunogen:	Recombinant fusion protein containing a sequence corresponding to amino acids 1021-1210 of human EGFR
Reactivity:	Human, Mouse, Rat
Applications:	Western Blot: 1:1000 - 1:5000 Immunohistochemistry (paraffin-embedded tissues) 1:50 - 1:200 Immunofluorescence: 1:100 - 1:500 Immunocytochemistry: 1:100 - 1:500 Immunoprecipitation: 0.5µg-4µg antibody for 200µg-400µg extracts of whole cells
Molecular Weight:	175kDa
Purification:	Aff. Pur.
Synonyms:	ERBB; ERBB2; HER1; mENA; ERBB1; PIG61; NISBD2; EGFR
Background:	The protein encoded by this gene is a transmembrane glycoprotein that is a member of the protein kinase superfamily. This protein is a receptor for members of the epidermal growth factor family. EGFR is a cell surface protein that binds to epidermal growth factor. Binding of the protein to a ligand induces receptor dimerization and tyrosine autophosphorylation and leads to cell proliferation. Mutations in this gene are associated with lung cancer.
Form:	Liquid
Buffer:	PBS with 0.01% thimerosal, 50% glycerol, pH 7.3.
Storage:	Store at -20°C, and avoid repeat freeze-thaw cycles.



Western blot analysis of lysates from A431 cells, using EGFR Rabbit pAb at 1:2000 dilution.
Secondary antibody: HRP Goat Anti-Rabbit IgG (H+L) at 1:10000 dilution.
Lysates/proteins: 25ug per lane.
Blocking buffer: 3% nonfat dry milk in

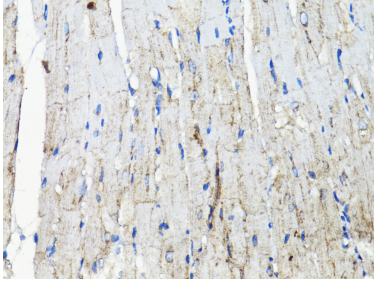


Immunohistochemistry analysis of paraffin-embedded rat liver using EGFR Rabbit pAb at dilution of 1:200 (40x lens). Perform microwave antigen retrieval with 10 mM PBS buffer pH 7.2 before commencing with IHC staining protocol.

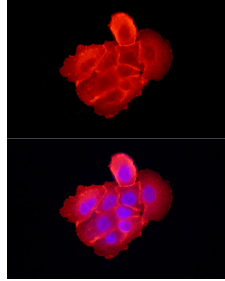


Immunohistochemistry analysis of paraffin-embedded human placenta using EGFR Rabbit pAb at dilution of 1:200 (40x lens). Perform microwave antigen retrieval with 10 mM PBS buffer pH 7.2 before commencing with IHC staining

TBST.
Detection: ECL West Pico Plus.
Exposure time: 3s.

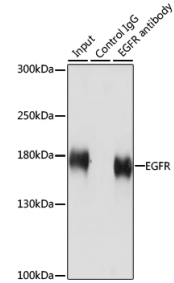


Immunohistochemistry analysis of paraffinembedded Mouse heart using EGFR Rabbit pAb at dilution of 1:200 (40x lens). Perform microwave antigen retrieval with 10 mM PBS buffer pH 7.2 before commencing with IHC staining protocol.



Immunofluorescence analysis of A-431 cells using EGFR Rabbit pAb at dilution of 1:300 (40x lens). Secondary antibody: Cy3 Goat Anti-Rabbit IgG (H+L) at 1:500 dilution. Blue: DAPI for nuclear staining.

protocol.



Immunoprecipitation analysis of 200 µg extracts of HeLa cells using 3 µg EGFR antibody. Western blot was performed from the immunoprecipitate using EGFR antibody at a dilution of 1:1000.

**For Research use only
IMMUNOLOGICAL SCIENCES**